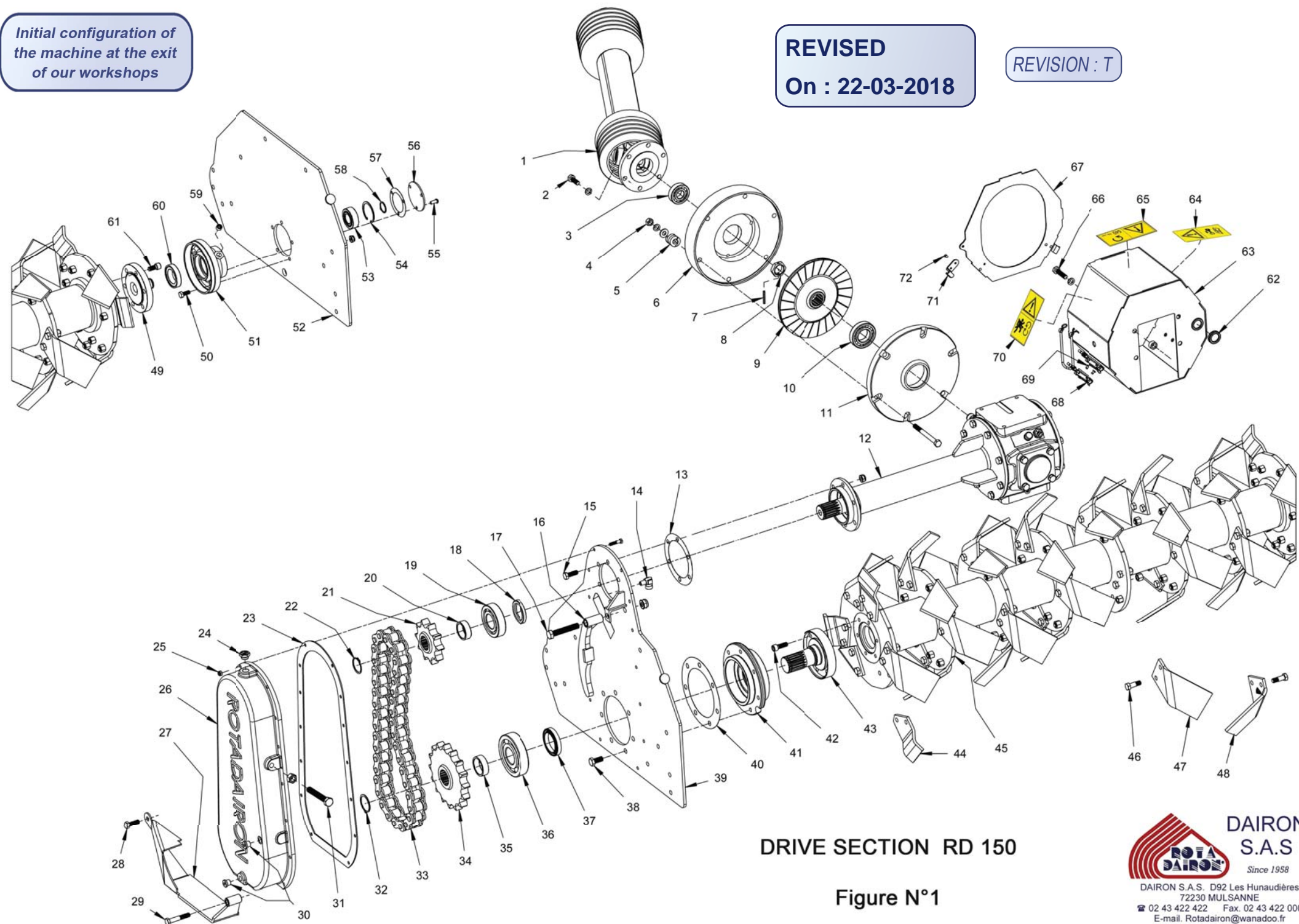


Initial configuration of the machine at the exit of our workshops

**REVISED**  
On : 22-03-2018

REVISION : T



DRIVE SECTION RD 150

Figure N°1

| REV : T | PARTS LIST FIGURE N° 1 RD 150 FROM A302 WITH - A852 |                  | 22/03/2018 |
|---------|---|------------------|------------|
| ITEM    | DESIGNATION   | PARTS REFERENCES | QTY        |
| 1       | PTO   | 094-1004         | 1          |
| 2       | HH SCREW M 12-35                                    | 850-2018         | 6          |
|         | WASHER W 12 , YZP                                   | 695-1019         | 6          |
| 3       | BEARING 6305 2RS                                    | 690-1006         | 1          |
| 4       | CLUTCH NUTTED BOLT                                  | 4000-1022        | 6          |
| 5       | CLUTCH SPRING                                       | 660-1004         | 6          |
| 6       | FRONT FLYWHEEL                                      | 800-1002         | 1          |
| 7       | DOWEL PIN Ø6 - 40                                   | 340-1009         | 1          |
| 8       | HEX NUT M 30 X 200                                  | 260-1007         | 1          |
| 9       | CLUTCH PLATE  | 5150-257-1001    | 1          |
| 10      | BEARING 6208 2RS                                    | 690-1005         | 1          |
| 11      | REAR FLYWHEEL                                       | 800-1001         | 1          |
| 12      | FIGURE N°2  |                  |            |
| 13      | PAPER GASKET  | 415-1002         | 1          |
| 14      | ELBOW UNION G 13-8X13                               | 265-1002         | 1          |
| 15      | HH SCREW M 12-35                                    | 850-2018         | 6          |
|         | HEX NUT M 12  | 260-1012         | 6          |
| 16      | CHAIN TENSIONER                                     | 5150-730-1004    | 1          |
| 17      | HH SCREW M 16-90                                    | 850-1020         | 1          |
|         | HEX NUT M 16  | 260-1008         | 1          |
| 18      | SEALING RING Ø50/Ø72/10                             | 400-1004         | 1          |
| 19      | BEARING 6309  | 690-1003         | 1          |
| 20      | SPACER BUSHING                                      | 139-1005         | 1          |
| 21      | CHAIN SPROCKET 10T - 38.1 PITCH                     | 600-1008         | 1          |
| 22      | CIRCLIP 45 EXT.                                     | 190-1003         | 1          |
| 23      | CORK SEAL   | 420-1002         | 1          |
| 24      | FILLER CAP  | 155-1003         | 1          |
| 25      | HH SCREW M 8-35                                     | 850-2020         | 14         |
|         | HEX NUT M 8   | 260-1010         | 14         |
| 26      | CHAIN CASE  | 180-1003         | 1          |
| 27      | SHOE  | 5150-710-1002    | 1          |
| 28      | HH SCREW M 12-35                                    | 850-2018         | 1          |
|         | HEX NUT M 12  | 260-1012         | 1          |
| 29      | HH SCREW M 12-70                                    | 850-2015         | 1          |
|         | HEX NUT M 12  | 260-1012         | 1          |
| 30      | DRAIN CAP   | 155-1016         | 2          |

Initial configuration of the machine at the exit of our workshops

| REV : T | PARTS LIST FIGURE N° 1 RD 150 FROM A302 WITH - A852 |                  | 22/03/2018 |
|---------|---|------------------|------------|
| ITEM    | DESIGNATION   | PARTS REFERENCES | QTY        |
| 31      | HH SCREW M 16-110                                   | 850-2010         | 1          |
|         | HEX NUT M 16  | 260-1015         | 1          |
| 32      | CIRCLIP 50 EXT.                                     | 190-1004         | 1          |
| 33      | CHAIN 38 LINKS - 38.1 PITCH                         | 175-1002         | 1          |
| 34      | CHAIN SPROCKET 16T - 38.1 PITCH                     | 600-1007         | 1          |
| 35      | SPACER BUSHING                                      | 139-1006         | 1          |
| 36      | BEARING 6410  | 690-1009         | 1          |
| 37      | SIMMERING SEAL 60/84-13/14.5                        | 400-1031         | 1          |
| 38      | HH SCREW M 14-30                                    | 850-2005         | 7          |
| 39      | LEFT SIDE   | 5150-195-1103    | 1          |
| 40      | PAPER GASKET  | 415-1017         | 1          |
| 41      | SCREW-IN BEARING HOUSING                            | 160-1037         | 1          |
| 42      | HS HC SCREW M 12 -35                                | 850-3015         | 6          |
| 43      | DRIVE PLATE   | 5150-630-1011    | 1          |
| 44      | S BLADE   | 450-1005         | 6          |
| 45      | ROTOR   | 5150-760-1020    | 1          |
| 46      | BLADE BOLT  | 4000-002         | 96         |
| 47      | RIGHT BLADE 90 X 8                                  | 450-1003         | 21         |
| 48      | LEFT BLADE 90 X 8                                   | 450-1004         | 21         |
| 49      | SMALL PLATE   | 630-1103         | 1          |
| 50      | HH SCREW 10 - 25                                    | 850-2003         | 5          |
|         | HEX NUT M10 YZP                                     | 260-1011         | 5          |
| 51      | RIGHT BEARING HOUSING                               | 160-1031         | 1          |
| 52      | RIGHT SIDE  | 5150-195-1104    | 1          |
| 53      | BEARING 22206                                       | 690-1017         | 1          |
| 54      | CIRCLIP 62 INT.                                     | 190-1016         | 1          |
| 55      | BHCS SCREW M 8 - 20                                 | 850-3008         | 3          |
| 56      | END BELL  | 280-1123         | 1          |
| 57      | PAPER GASKET  | 415-1015         | 1          |
| 58      | CIRCLIP 30 EXT.                                     | 190-1002         | 1          |
| 59      | HEX HEAD PLUG G 3/8                                 | 155-1001         | 1          |
| 60      | CASSETTE SEAL Type3 Ø45X70x14.5/17                  | 400-1044         | 1          |
| 61      | HS HC SCREW M 12 -25 YZP                            | 850-3029         | 6          |
| 62      | BLANKING CAP  | 156-1005         | 1          |
| 63      | FLYWHEEL COVER                                      | 5150-640-1008    | 1          |
| 64      | DECAL - READ THE INSTRUCTION MANUAL                 | 460-1006         | 1          |

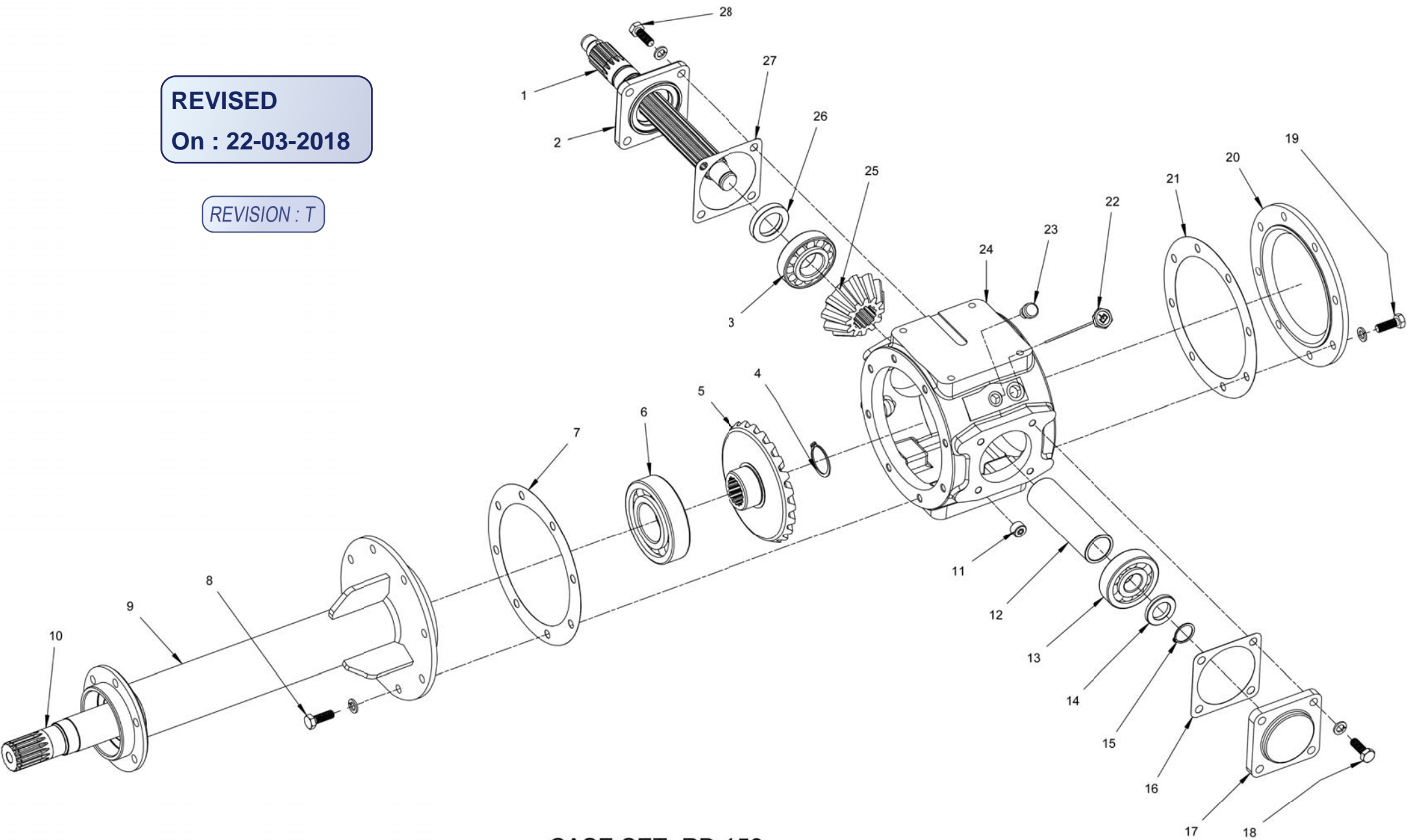
Initial configuration of the machine at the exit of our workshops

| REV : T | PARTS LIST FIGURE N° 1 RD 150 FROM A302 WITH - A852 |                  | 22/03/2018 |
|---------|---|------------------|------------|
| ITEM    | DESIGNATION   | PARTS REFERENCES | QTY        |
| 65      | DECAL - PTO SPEED 540 RPM                           | 460-1003         | 1          |
| 66      | HH SCREW M 12-50                                    | 850-2012         | 4          |
|         | WASHER W12 , YZP                                    | 695-1019         | 4          |
|         | SOCKET  | 240-1031         | 4          |
| 67      | FLYWHEEL COVER FRONT PLATE                          | 640-1095         | 1          |
| 68      | FLYWHEEL COVER LOCK                                 | 900-1002         | 2          |
| 69      | RIVET Ø 4.8 - 10.5                                  | 697-1004         | 4          |
| 70      | DECAL - DO NOT CLIMB ON MACHINE                     | 460-1009         | 1          |
| 71      | HOOK  | 900-1003         | 2          |
| 72      | RIVET Ø 4.8 - 10.5                                  | 697-1004         | 4          |

**REVISED**

**On : 22-03-2018**

*REVISION : T*



**CASE SET RD 150**

**Figure N°2**

*Initial configuration of  
the machine at the exit  
of our workshops*



**DAIRON  
S.A.S**  
*Since 1958*

DAIRON S.A.S. D92 Les Hunaudières  
72230 MULSANNE  
☎ 02 43 422 422 Fax. 02 43 422 000  
E-mail. Rotadairon@wanadoo.fr

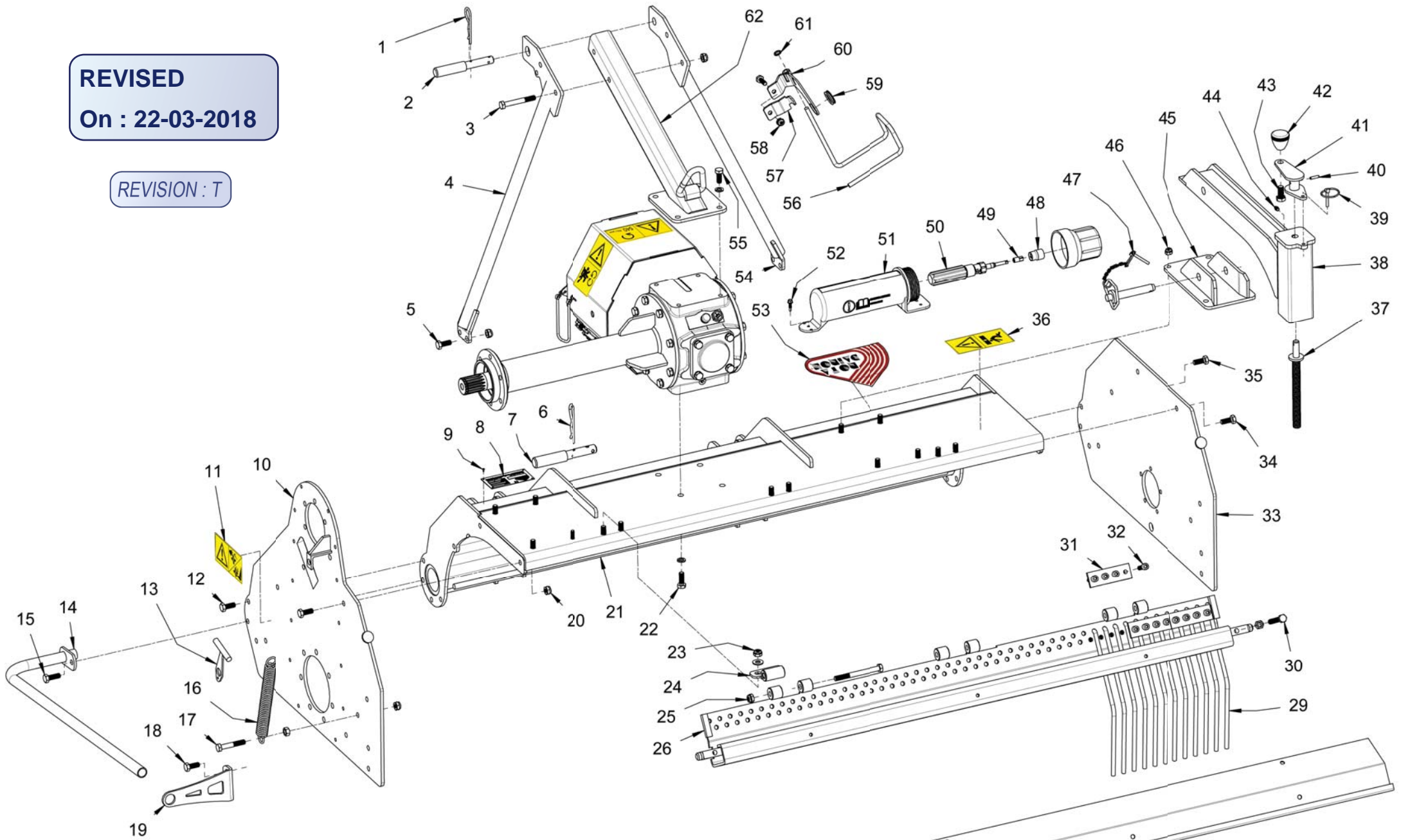
| REV : T | PARTS LIST FIGURE N° 2 RD 150 FROM A302 WITH - A852 |                  | 22/03/2018 |
|---------|---|------------------|------------|
| ITEM    | DESIGNATION   | PARTS REFERENCES | QTY        |
| 1       | INPUT SHAFT   | 5150-100-1003    | 1          |
| 2       | FRONT COVER   | 178-1001         | 1          |
| 3       | BEARING 30308                                       | 690-1014         | 1          |
| 4       | CIRCLIP 45 EXT.                                     | 190-1003         | 1          |
| 5       | BEVEL GEAR 23T                                      | 600-1006         | 1          |
| 6       | BEARING 6312  | 690-1010         | 1          |
| 7       | PAPER GASKET  | 415-1003         | 1          |
| 8       | HH SCREW M 12-35                                    | 850-2018         | 6          |
|         | WASHER W 12 ,YZP                                    | 695-1019         | 6          |
| 9       | SHAFT TUBE  | 5150-760-1035    | 1          |
| 10      | OUTPUT SHAFT  | 100-1006         | 1          |
| 11      | HEX HEAD PLUG G 1/2                                 | 155-1005         | 1          |
| 12      | SPACER BUSHING                                      | 139-1007         | 1          |
| 13      | BEARING 6406  | 690-1007         | 1          |
| 14      | INPUT SHAFT WASHER                                  | 695-1046         | 1          |
| 15      | CIRCLIP 30 EXT.                                     | 190-1002         | 1          |
| 16      | PAPER GASKET  | 415-1008         | 1          |
| 17      | BACK COVER  | 178-1005         | 1          |
| 18      | HH SCREW M 12-35                                    | 850-2018         | 4          |
|         | WASHER W 12 ,YZP                                    | 695-1019         | 4          |
| 19      | HH SCREW M 12-35                                    | 850-2018         | 6          |
|         | WASHER W 12 ,YZP                                    | 695-1019         | 6          |
| 20      | TRANSFER CASE COVER                                 | 197-1001         | 1          |
| 21      | PAPER GASKET  | 415-1003         | 1          |
| 22      | DIPSTICK  | 390-1001         | 1          |
| 23      | SNIFTER VALVE G 3/8                                 | 670-1004         | 1          |
| 24      | TRANSFER CASE                                       | 180-1007         | 1          |
| 25      | BEVEL GEAR 12T                                      | 600-1003         | 1          |
| 26      | LIP SEAL 40, 62,10 DL                               | 400-1003         | 1          |
| 27      | PAPER GASKET  | 415-1008         | 1          |
| 28      | HH SCREW M 12-35                                    | 850-2018         | 4          |
|         | WASHER W 12 ,YZP                                    | 695-1019         | 4          |

Initial configuration of the machine at the exit of our workshops

**REVISED**

**On : 22-03-2018**

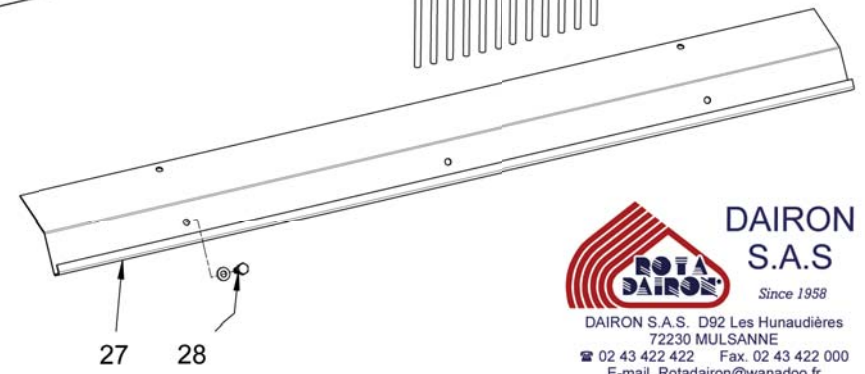
**REVISION : T**



**HOOD SECTION RD 150**

**Figure N°3**

*Initial configuration of the machine at the exit of our workshops*



| REV : T | PARTS LIST FIGURE N° 3 RD 150 FROM A302 WITH - A852 |                  | 22/03/2018 |
|---------|---|------------------|------------|
| ITEM    | DESIGNATION   | PARTS REFERENCES | QTY        |
| 1       | R-CLIP RETAINING PIN Ø4.5                           | 340-1003         | 1          |
| 2       | DOUBLE AXLE 19 X 25                                 | 120-1001         | 1          |
| 3       | HH SCREW M 12-90                                    | 850-1021         | 2          |
|         | HEX NUT M12   | 260-1012         | 2          |
| 4       | LEFT LIFT ARM                                       | 5150-760-G018    | 1          |
| 5       | HH SCREW M 12-30                                    | 850-2016         | 4          |
|         | HEX NUT M12   | 260-1012         | 4          |
| 6       | R-CLIP RETAINING PIN Ø6                             | 340-1001         | 2          |
| 7       | DOUBLE AXLE 22 X 28                                 | 120-1006         | 2          |
| 8       | MACHINE DATA PLATE                                  | 460-1010         | 1          |
| 9       | RIVET Ø3 X 10                                       | 697-1002         | 4          |
| 10      | LEFT SIDE   | 5150-195-1103    | 1          |
| 11      | DECAL - FEET / HAND SEVERING HAZARDS                | 460-1007         | 2          |
| 12      | HH SCREW M 12-30                                    | 850-2016         | 2          |
|         | HEX NUT M12   | 260-1012         | 2          |
| 13      | SPRING HANDLE                                       | 5075-620-1251    | 2          |
| 14      | SIDE GUARD  | 5100-760-1205    | 2          |
| 15      | HH SCREW M 12-35                                    | 850-2018         | 2          |
|         | HEX NUT M12   | 260-1012         | 2          |
| 16      | SPRING  | 660-1005         | 2          |
| 17      | HH SCREW M 12-70                                    | 850-2015         | 2          |
|         | HEX NUT M12   | 260-1014         | 2          |
|         | HEX NUT M12   | 260-1012         | 2          |
| 18      | HH SCREW M 12-30                                    | 850-2016         | 2          |
|         | HEX NUT M12   | 260-1012         | 2          |
| 19      | SIDE GUARD SPACER                                   | 620-1144         | 2          |
| 20      | HH SCREW M 12-30                                    | 850-2016         | 3          |
|         | HEX NUT M12   | 260-1012         | 3          |
| 21      | HOOD  | 5150-770-1033    | 1          |
| 22      | HH SCREW M 12-35                                    | 850-2018         | 4          |
|         | WASHER W 12 YZP                                     | 695-1019         | 4          |
| 23      | HH SCREW M 12-30                                    | 850-2016         | 6          |
|         | WASHER MU 12 YZP                                    | 695-1018         | 6          |
|         | HEX NUT M 12  | 260-1012         | 6          |
| 24      | GRID HINGE  | 5100-240-1005    | 3          |

Initial configuration of the machine at the exit of our workshops



| REV : T | PARTS LIST FIGURE N° 3 RD 150 FROM A302 WITH - A852 |                  | 22/03/2018 |
|---------|---|------------------|------------|
| ITEM    | DESIGNATION   | PARTS REFERENCES | QTY        |
| 25      | HH SCREW M 12-130                                   | 850-2013         | 3          |
|         | HEX NUT M12   | 260-1012         | 3          |
| 26      | GRID PLATE  | 5150-770-1018    | 1          |
| 27      | REAR FLAP   | 770-1019         | 1          |
| 28      | HH SCREW M 10 -25                                   | 850-2003         | 3          |
|         | WASHER MU 10 YZP                                    | 695-1017         | 3          |
| 29      | GRID FINGER   | 210-1002         | 49         |
| 30      | HH SCREW M 12-80                                    | 850-2014         | 2          |
|         | HEX NUT M12   | 260-1014         | 2          |
| 31      | GRID CLAMP  | 150-1001         | 12         |
| 32      | HSHC SCREW M 10 -30                                 | 850-3002         | 48         |
|         | HEX NUT M10   | 260-1011         | 48         |
| 33      | RIGHT SIDE  | 5150-195-1104    | 1          |
| 34      | HH SCREW M 12-30                                    | 850-2016         | 3          |
|         | HEX NUT M12   | 260-1012         | 3          |
| 35      | HH SCREW M 12-30                                    | 850-2016         | 3          |
|         | HEX NUT M12   | 260-1012         | 3          |
| 36      | DECAL - DO NOT STAND UNDER THE LOAD                 | 460-1005         | 1          |
| 37      | FRAME SCREW   | 5100-850-1039    | 2          |
| 38      | ARM   | 5150-270-1011    | 2          |
| 39      | LINCH PIN Ø6  | 340-1005         | 2          |
| 40      | DOWEL PIN Ø6 X 25                                   | 340-1007         | 2          |
| 41      | CRANK   | 5100-640-1001    | 2          |
| 42      | CRANK HANDLE M 14                                   | 610-1001         | 2          |
| 43      | HH SCREW M 14-30                                    | 850-2005         | 2          |
| 44      | OILER M8  | 320-1001         | 2          |
| 45      | ARM BRACKET   | 5150-640-1006    | 2          |
| 46      | HH SCREW M 12-30                                    | 850-2016         | 8          |
|         | HEX NUT M12   | 260-1012         | 8          |
| 47      | HITCH PIN WITH HANDLE Ø19 L 115                     | 151-1002         | 2          |
| 48      | SOCKET J.19   | 530-1001         | 1          |
| 49      | COUPLER R.232                                       | 530-1002         | 1          |
| 50      | TORQUE SCREWDRIVER N.m                              | 745-1001         | 1          |
|         | TORQUE SCREWDRIVER lbf.in                           | 745-1002         | 1          |
| 51      | INSTRUCTION MANUAL BOX                              | 180-1032         | 1          |

Initial configuration of the machine at the exit of our workshops

| REV : T | PARTS LIST FIGURE N° 3 RD 150 FROM A302 WITH - A852 |                  | 22/03/2018 |
|---------|---|------------------|------------|
| ITEM    | DESIGNATION   | PARTS REFERENCES | QTY        |
| 52      | SELF-TAPPING SCREW M 6.3 - 25.4                     | 850-1062         | 2          |
| 53      | DECAL - DAIRON LOGO                                 | 460-1001         | 1          |
| 54      | RIGHT LIFT ARM                                      | 5150-760-D018    | 1          |
| 55      | HH SCREW M 12-30                                    | 850-2016         | 4          |
|         | WASHER W 12 YZP                                     | 695-1019         | 4          |
| 56      | LOCK PLATE STAND                                    | 620-1099         | 1          |
| 57      | LOCK PLATE CLAW                                     | 640-1299         | 1          |
| 58      | HH SCREW M 10 -30                                   | 850-2002         | 1          |
|         | HEX NUT M 10  | 260-1011         | 1          |
| 59      | LOCK PLATE STAND CAP                                | 156-1009         | 1          |
| 60      | LOCK PLATE CLAW                                     | 3130-640-1300    | 1          |
| 61      | RETAINING RING                                      | 190-1025         | 1          |
| 62      | MAIN HITCH POINT                                    | 5150-750-1091    | 1          |

# MULTIFUNCTION FRAME : 5150-MULTI

EXCEPT LEVELLING BLADE

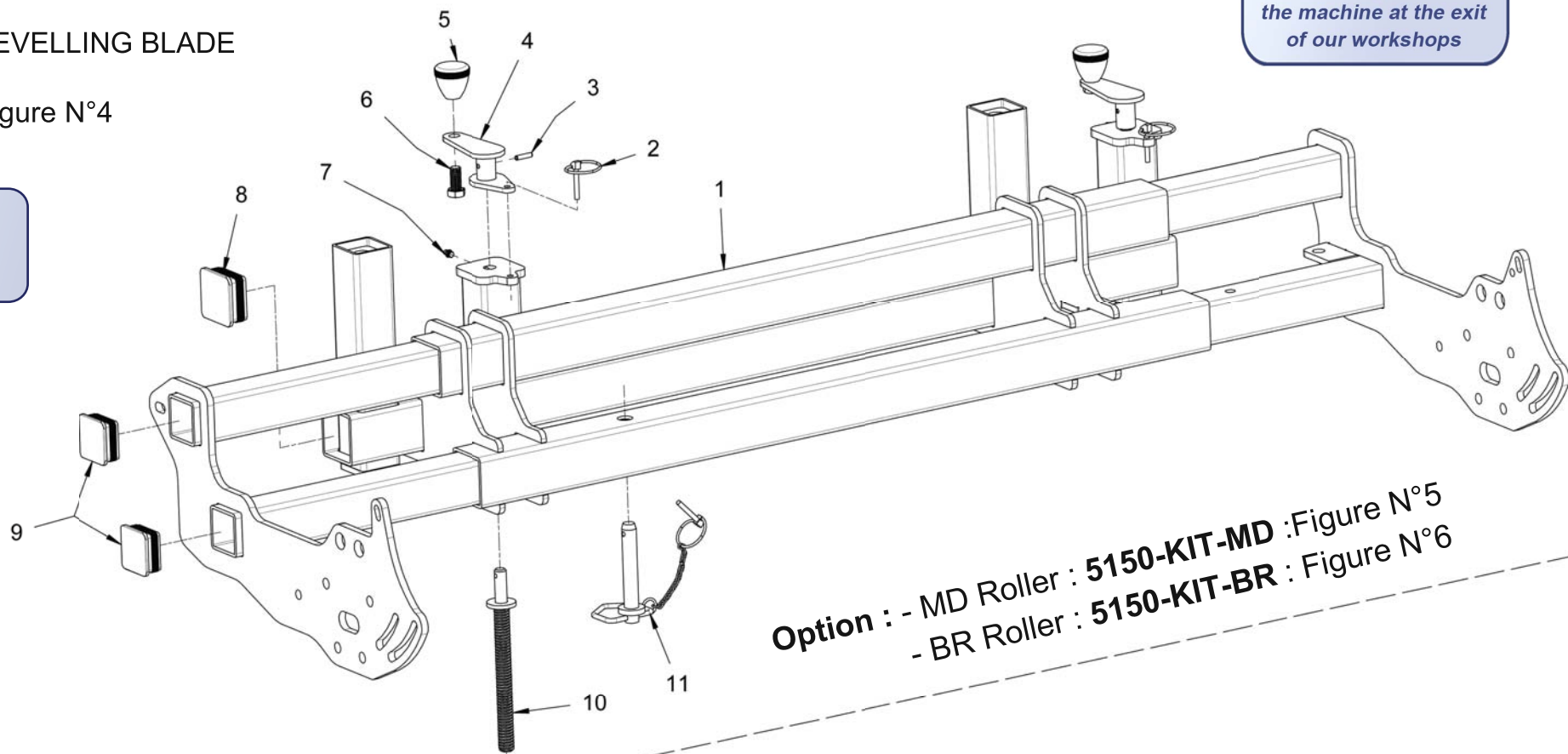
Figure N°4

REVISED

On : 22-03-2018

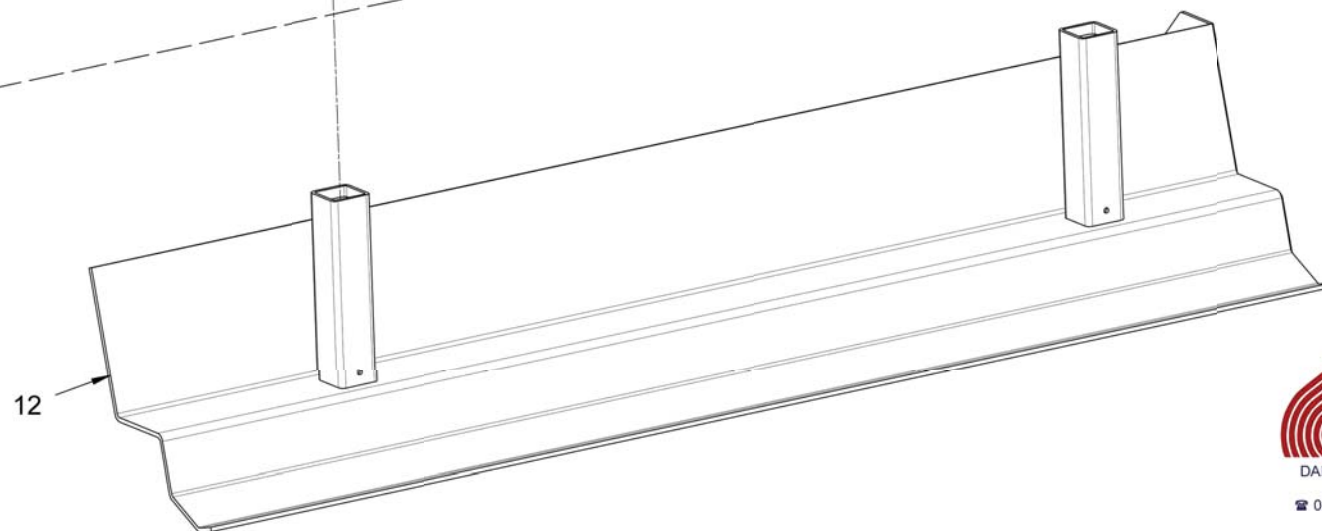
REVISION : T

Initial configuration of the machine at the exit of our workshops



Option : - MD Roller : 5150-KIT-MD : Figure N°5  
- BR Roller : 5150-KIT-BR : Figure N°6

+ LEVELLING BLADE



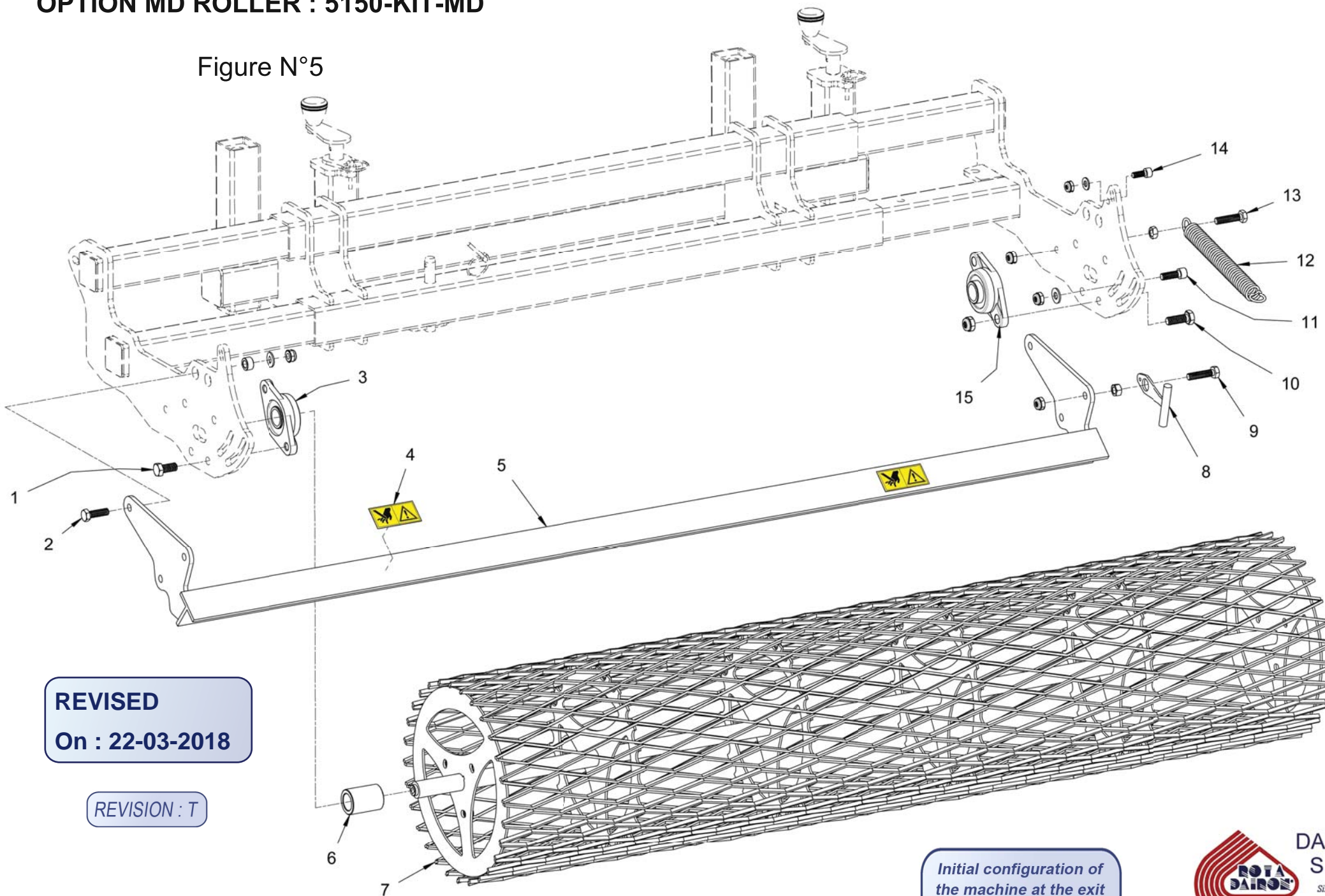
DAIRON S.A.S

Since 1958  
DAIRON S.A.S. D92 Les Hunaudières  
72230 MULSANNE  
☎ 02 43 422 422 Fax. 02 43 422 000  
E-mail. b-e@rotadairon.fr

| REV : T | PARTS LIST FIGURE N° 4 RD 150 FROM A302 WITH - A852 |                  | 22/03/2018 |
|---------|---|------------------|------------|
| ITEM    | DESIGNATION   | PARTS REFERENCES | QTY        |
| 1       | MULTIFONCTION FRAME                                 | 5150-270-1344    | 1          |
| 2       | LINCH PIN Ø6  | 340-1005         | 2          |
| 3       | DOWEL PIN Ø6 X 25                                   | 340-1007         | 2          |
| 4       | CRANK   | 5036-640-1031    | 2          |
| 5       | CRANK HANDLE M 14                                   | 610-1001         | 2          |
| 6       | HH SCREW M 14-30                                    | 850-2005         | 2          |
| 7       | OILER M8  | 320-1001         | 2          |
| 8       | CAP 70 X 70   | 156-1003         | 2          |
| 9       | CAP 60 x 60   | 156-1002         | 4          |
| 10      | FRAME SCREW   | 5100-850-1039    | 2          |
| 11      | HITCH PIN WITH HANDLE Ø19 X 115                     | 151-1002         | 1          |
| 12      | LEVELLING BLADE                                     | 5150-450-1011    | 1          |

# OPTION MD ROLLER : 5150-KIT-MD

Figure N°5



REVISED

On : 22-03-2018

REVISION : T

Initial configuration of  
the machine at the exit  
of our workshops



DAIRON  
S.A.S

Since 1958

DAIRON S.A.S. D92 Les Hunaudières  
72230 MULSANNE

☎ 02 43 422 422 Fax. 02 43 422 000  
E-mail. b-e@rotadairon.fr

| REV : T | PARTS LIST FIGURE N° 5 RD 150 FROM A302 WITH - A852 |                  | 22/03/2018 |
|---------|---|------------------|------------|
| ITEM    | DESIGNATION   | PARTS REFERENCES | QTY        |
| 1       | HH SCREW M 14-30                                    | 850-2005         | 2          |
| 2       | HH SCREW M 12-40                                    | 850-2007         | 2          |
|         | PIVOT SOCKET  | 240-1031         | 2          |
|         | WASHER MU 12  | 695-1018         | 2          |
|         | HEX NUT M 12  | 260-1012         | 2          |
| 3       | CAST IRON BEARING HOUSING UCFL 206 M14              | 690-1052         | 1          |
| 4       | DECAL - CATCHING HAZARD                             | 460-1012         | 2          |
| 5       | MD SCRAPER  | 5150-725-1033    | 1          |
| 6       | ROLLER SPACER SLEEVE L : 62                         | 240-1234         | 1          |
| 7       | MD ROLLER   | 5150-505-1005    | 1          |
| 8       | SPRING HANDLE                                       | 5075-620-1251    | 2          |
| 9       | HH SCREW M 12-50                                    | 850-2012         | 2          |
|         | HEX NUT M 12  | 260-1014         | 2          |
|         | HEX NUT M 12  | 260-1012         | 2          |
| 10      | HH SCREW M 14-40                                    | 850-2006         | 2          |
|         | HEX NUT M 14  | 260-1013         | 2          |
| 11      | HSHC SCREW M 12 -35                                 | 850-3031         | 2          |
|         | WASHER MU 12  | 695-1018         | 2          |
|         | HEX NUT M 12  | 260-1012         | 2          |
| 12      | SPRING  | 660-1005         | 2          |
| 13      | HH SCREW M 12-50                                    | 850-2012         | 2          |
|         | HEX NUT M 12  | 260-1014         | 2          |
|         | HEX NUT M 12  | 260-1012         | 2          |
| 14      | HSHC SCREW M 10 -25                                 | 850-3024         | 2          |
|         | WASHER MU 10  | 695-1017         | 2          |
|         | HEX NUT M 10  | 260-1011         | 2          |
| 15      | CAST IRON BEARING HOUSING UCFL 206                  | 690-1021         | 1          |



| REV : T | PARTS LIST FIGURE N° 6 RD 150 FROM A302 WITH - A852 |                  | 22/03/2018 |
|---------|---|------------------|------------|
| ITEM    | DESIGNATION   | PARTS REFERENCES | QTY        |
| 1       | CAST IRON BEARING HOUSING UCFL 206                  | 690-1021         | 1          |
| 2       | HH SCREW M 14-40                                    | 850-2006         | 2          |
|         | HEX NUT M 14  | 260-1013         | 2          |
| 3       | DECAL - CATCHING HAZARD                             | 460-1012         | 2          |
| 4       | RHS SCREW SQUARE NECK M 10 - 80                     | 850-2034         | 28         |
|         | HEX NUT M 10  | 260-1011         | 28         |
| 5       | SCRAPER TOOTH                                       | 200-1001         | 28         |
| 6       | BR SCRAPER  | 5150-750-1703    | 1          |
| 7       | CAST IRON BEARING HOUSING UCFL 206 M14              | 690-1052         | 1          |
| 8       | HH SCREW M 14-30                                    | 850-2005         | 2          |
| 9       | HH SCREW M 12-40                                    | 850-2007         | 2          |
|         | PIVOT SOCKET  | 240-1031         | 2          |
|         | WASHER MU 12  | 695-1018         | 2          |
|         | HEX NUT M 12  | 260-1012         | 2          |
| 10      | HH SCREW M 12-40                                    | 850-2007         | 2          |
|         | WASHER MU 12  | 695-1018         | 2          |
|         | HEX NUT M 12  | 260-1012         | 2          |
| 11      | PLASTIC CAP 50 x 50                                 | 156-1001         | 2          |
| 12      | ROLLER SPACER SLEEVE L : 62                         | 240-1234         | 1          |
| 13      | LOCKING RING Ø325                                   | 158-1006         | 1          |
| 14      | 1/2 CAST-IRON DISC Ø325                             | 158-1004         | 2          |
| 15      | CAST-IRON DISC Ø325                                 | 158-1002         | 27         |
| 16      | BR ROLLER   | 5150-760-1389    | 1          |



**OPTION : Hydraulic kit for displacement of the frame**

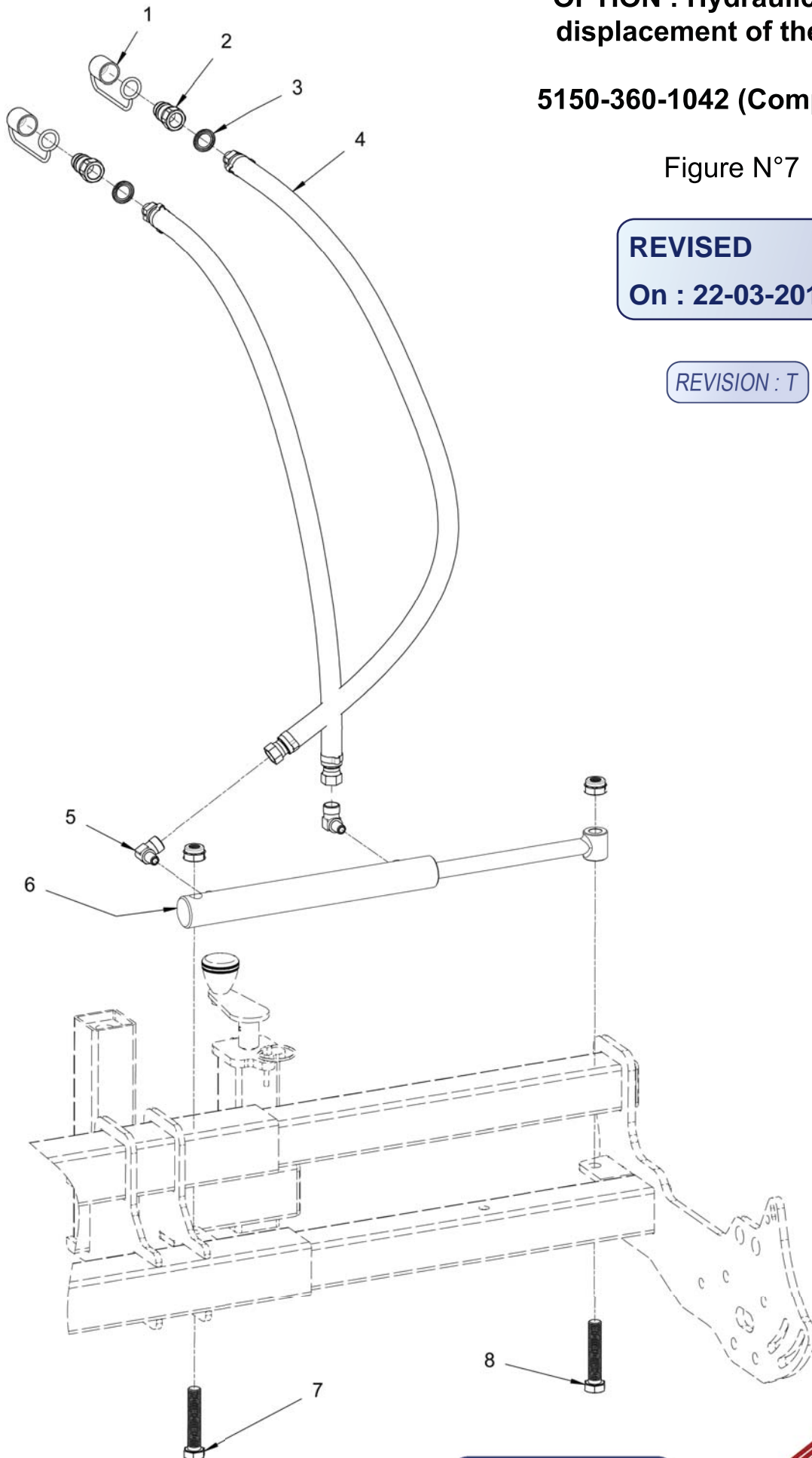
**5150-360-1042 (Complete kit)**

Figure N°7

**REVISED**

**On : 22-03-2018**

REVISION : T



*Initial configuration of the machine at the exit of our workshops*

| REV : T | PARTS LIST FIGURE N° 7 RD 150 FROM A302 WITH - A852 |                  | 22/03/2018 |
|---------|---|------------------|------------|
| ITEM    | DESIGNATION   | PARTS REFERENCES | QTY        |
| 1       | HYDRAULIC CAP                                       | 156-1012         | 2          |
| 2       | MALE COUPLER POPPET VALVE 1/2                       | 360-1030         | 2          |
| 3       | COMPOSITE SEAL 21                                   | 360-1031         | 2          |
| 4       | HOSE L : 3000                                       | 360-1227         | 2          |
| 5       | ELBOW UNION G 13-8X13                               | 265-1002         | 2          |
| 6       | JACK 700/20   | 360-1042         | 1          |
| 7       | HH SCREW M 16-80                                    | 850-2011         | 1          |
|         | HEX NUT M 16  | 260-1008         | 1          |
| 8       | HH SCREW M 16-80                                    | 850-2011         | 1          |
|         | HEX NUT M 16  | 260-1008         | 1          |