

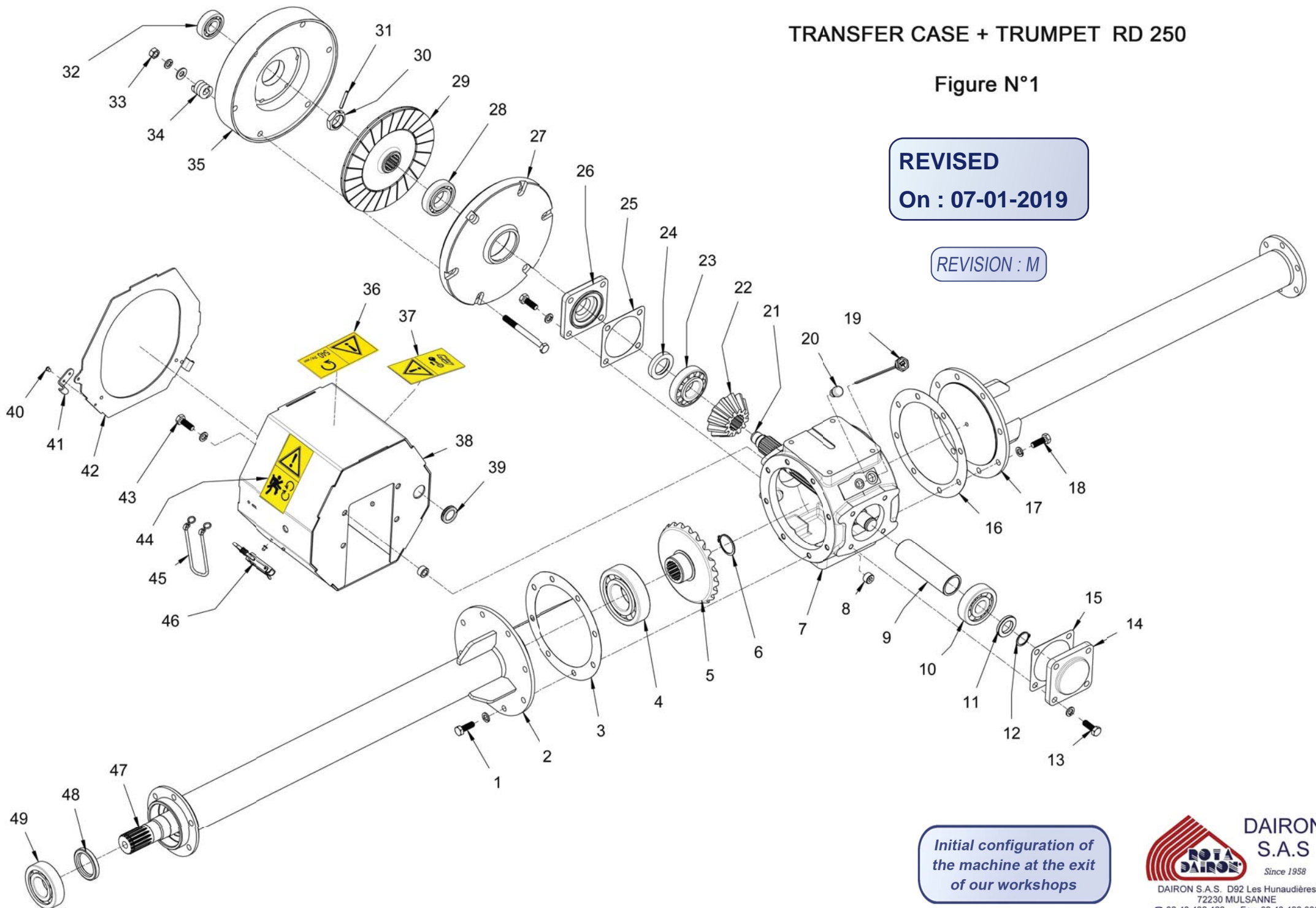
# TRANSFER CASE + TRUMPET RD 250

Figure N°1

**REVISED**

**On : 07-01-2019**

**REVISION : M**



*Initial configuration of the machine at the exit of our workshops*

REV : M	PARTS LIST FIGURE N° 1 RD 250 FROM A572		07/01/2019
ITEM	DESIGNATION	PARTS REFERENCES	
		RD 250	QTY
1	HH SCREW M 12-35	850-1018	8
	WASHER W 12 ,YZP	695-1004	8
2	LEFT TRUMPET	5205-760-1072	1
3	PAPER GASKET	415-1003	1
4	BEARING 6312	690-1010	1
5	BEVEL GEAR 23T	600-1006	1
6	CIRCLIP 45 EXT.	190-1003	1
7	TRANSFER CASE	180-1007	1
8	HEX HEAD PLUG G 1/2	155-1005	1
9	SPACER BUSHING	139-1007	1
10	BEARING 6406	690-1007	1
11	INPUT SHAFT WASHER	695-1046	1
12	CIRCLIP 30 EXT.	190-1002	1
13	HH SCREW M 12-35	850-1018	8
	WASHER W 12 ,YZP	695-1004	8
14	BACK COVER	178-1005	1
15	PAPER GASKET	415-1008	1
16	PAPER GASKET	415-1003	1
17	RIGHT TRUMPET	5205-760-1073	1
18	HH SCREW M 12-35	850-1018	8
	WASHER W 12 ,YZP	695-1004	8
19	DIPSTICK	390-1001	1
20	SNIFTER VALVE G 3/8	670-1004	1
21	INPUT SHAFT	5150-100-1003	1
22	BEVEL GEAR 12T	600-1003	1
23	BEARING 30308	690-1014	1
24	LIP SEAL 40, 62,10 DL	400-1003	1
25	PAPER GASKET	415-1008	1
26	FRONT COVER	178-1001	1
27	REAR FLYWHEEL	800-1001	1
28	BEARING 6208 2RS	690-1005	1
29	CLUTCH PLATE	5150-257-1001	1
30	HEX NUT M 30 X 200	260-1007	1
31	DOWEL PIN Ø6 - 40	340-1009	1
32	BEARING 6305 2RS	690-1006	1

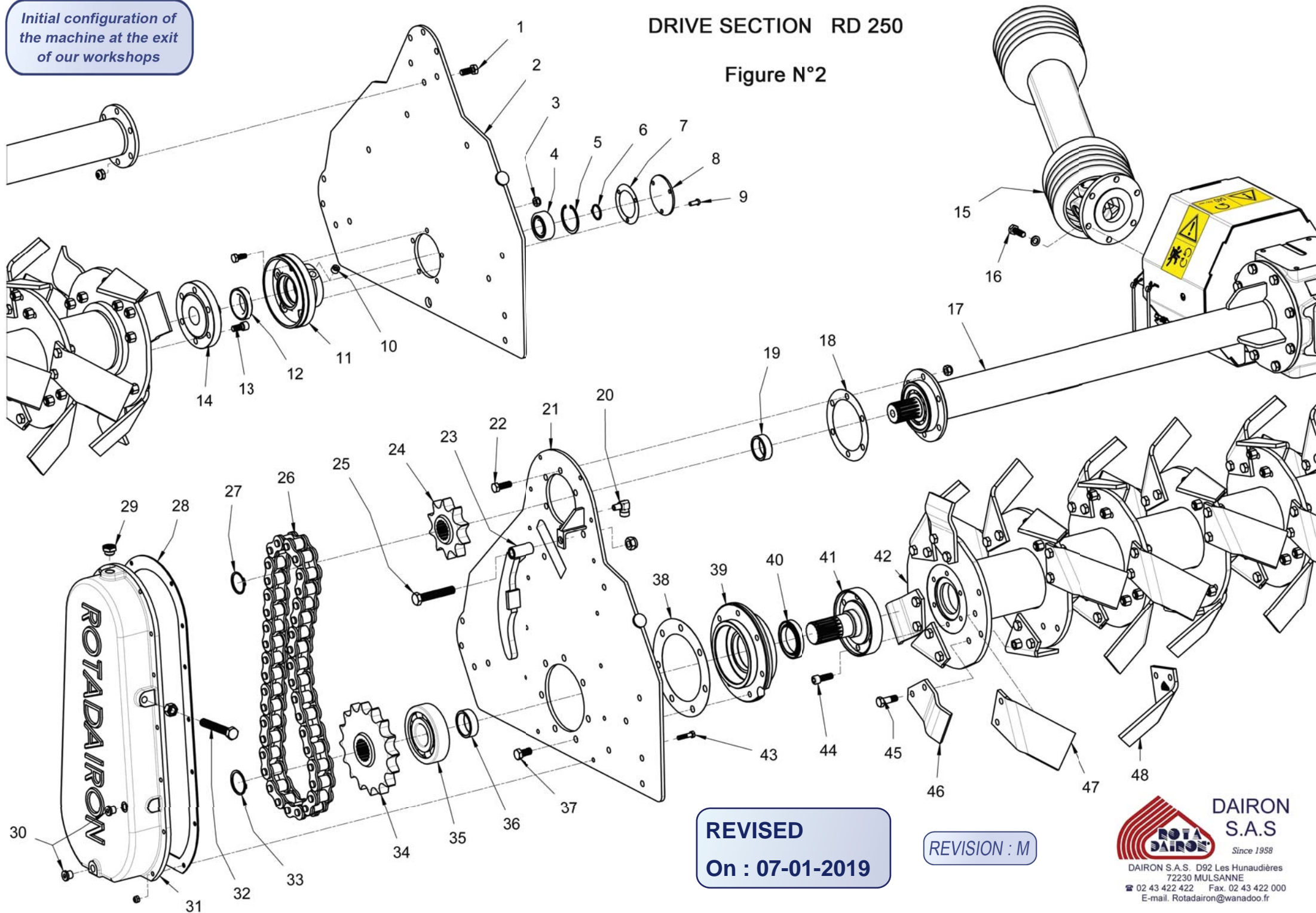
Initial configuration of the machine at the exit of our workshops

REV : M	PARTS LIST FIGURE N° 1 RD 250 FROM A572		07/01/2019
ITEM	DESIGNATION	PARTS REFERENCES	
		RD 250	QTY
33	CLUTCH NUTTED BOLT	4000-1022	6
34	CLUTCH SPRING	660-1004	6
35	FRONT FLYWHEEL	800-1002	1
36	DECAL - PTO SPEED 540 RPM	460-1003	1
37	DECAL - READ THE INSTRUCTION MANUAL	460-1006	1
38	FLYWHEEL COVER	5150-640-1008	1
39	BLANKING CAP	156-1005	1
40	HOOK	900-1003	2
41	RIVET Ø 4.8 - 10.5	697-1004	4
42	FLYWHEEL COVER FRONT PLATE	640-1095	1
43	HH SCREW M 12-35	850-2018	4
	WASHER W12 , YZP	695-1019	4
	SOCKET	240-1031	4
44	DECAL - DO NOT CLIMB ON MACHINE	460-1009	1
45	FLYWHEEL COVER LINK	900-1004	1
46	FLYWHEEL COVER LOCK	900-1002	2
	RIVET Ø 4.8 - 10.5	697-1004	4
47	SECONDARY SHAFT	100-1014	1
48	SEALING RING Ø50/Ø72/10	400-1004	1
49	BEARING 6309 C3	690-1003	1

Initial configuration of the machine at the exit of our workshops

DRIVE SECTION RD 250

Figure N°2



**REVISED**  
On : 07-01-2019

REVISION : M

REV : M	PARTS LIST FIGURE N° 2 RD 250 FROM A572		07/01/2019
ITEM	DESIGNATION	PARTS REFERENCES	
		RD 250	QTY
1	HH SCREW M 12-30	850-2016	6
	HEX NUT M 12	260-1012	6
2	RIGHT SIDE	5180-195-1105	1
3	HH SCREW 10 - 25	850-2003	5
	HEX NUT M 10	260-1011	5
4	BEARING 22206	690-1017	1
5	CIRCLIP 62 INT.	190-1016	1
6	CIRCLIP 30 EXT.	190-1002	1
7	PAPER GASKET	415-1015	1
8	END BELL	280-1123	1
9	BHCS SCREW M 8 - 20	850-3008	3
10	HEX HEAD PLUG G 3/8	155-1001	1
11	RIGHT BEARING HOUSING	160-1031	1
12	CASSETTE SEAL Type3 Ø45X70x14.5/17	400-1044	1
13	HSHC SCREW M 12 -25 YZP	850-3036	6
14	SMALL PLATE	630-1103	1
15	PTO	094-1004	1
16	HH SCREW M 12-35	850-2018	6
	WASHER W 12 , YZP	695-1019	6
17	FIGURE N°1		
18	PAPER GASKET	415-1002	1
19	SPACER BUSHING	139-1005	1
20	ELBOW UNION G 13-8X13	265-1002	1
21	LEFT SIDE	5150-195-1103	1
22	HH SCREW M 12-35	850-2018	6
	HEX NUT M 12	260-1012	6
23	CHAIN TENSIONER	5150-730-1004	1
24	CHAIN SPROCKET 10T - 38.1 PITCH	600-1008	1
25	HH SCREW M 16-90	850-1020	1
	HEX NUT M 16	260-1008	1
26	CHAIN 38 LINKS - 38.1 PITCH	175-1002	1
27	CIRCLIP 45 EXT.	190-1003	1
28	CORK SEAL	420-1002	1
29	FILLER CAP	155-1003	1
30	DRAIN CAP	155-1016	2

Initial configuration of the machine at the exit of our workshops



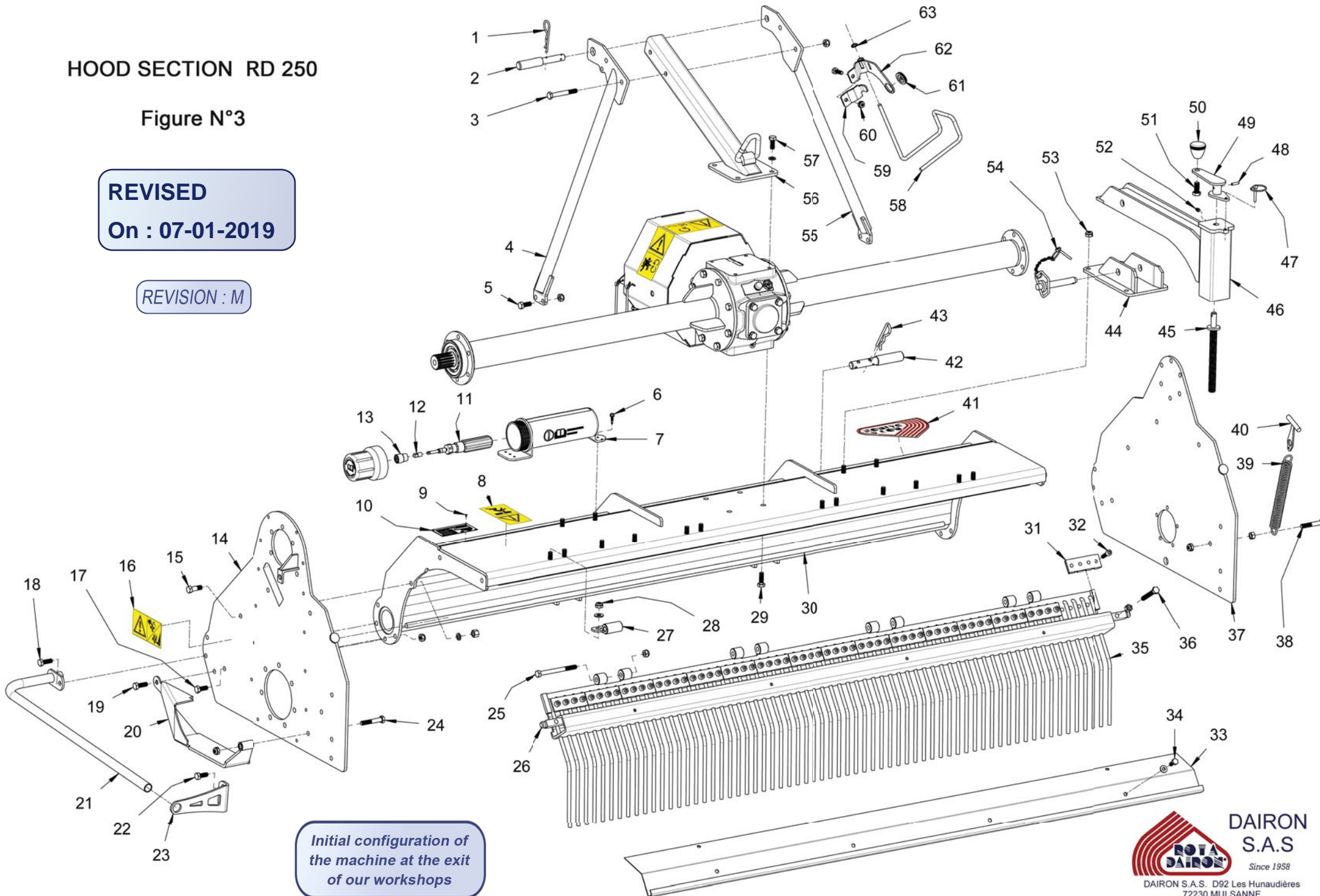
REV : M	PARTS LIST FIGURE N° 2 RD 250 FROM A572		07/01/2019
ITEM	DESIGNATION	PARTS REFERENCES	
		RD 250	QTY
31	CHAIN CASE	180-1003	1
32	HH SCREW M 16-110	850-2010	1
	HEX NUT M 16	260-1015	1
33	CIRCLIP 50 EXT.	190-1004	1
34	CHAIN SPROCKET 16T - 38.1 PITCH	600-1007	1
35	BEARING 6410	690-1009	1
36	SPACER BUSHING	139-1006	1
37	HH SCREW M 14-30	850-2005	7
38	PAPER GASKET	415-1017	1
39	SCREW-IN BEARING HOUSING	160-1037	1
40	SIMMERING SEAL 60/84-13/14.5	400-1031	1
41	DRIVE PLATE	5150-630-1011	1
42	ROTOR	5205-760-1075	1
43	HH SCREW M 8-35	850-2020	14
	HEX NUT M 8	260-1010	14
44	HSHC SCREW M 12 -35	850-3015	6
45	BLADE BOLT	4000-002	144
46	S BLADE	450-1005	6
47	RIGHT BLADE 90 X 8	450-1003	33
48	LEFT BLADE 90 X 8	450-1004	33

# HOOD SECTION RD 250

Figure N°3

**REVISED**  
On : 07-01-2019

REVISION : M



Initial configuration of the machine at the exit of our workshops

REV : M	PARTS LIST FIGURE N° 3 RD 250 FROM A572		07/01/2019
ITEM	DESIGNATION	PARTS REFERENCES	
		RD 250	QTY
1	R-CLIP RETAINING PIN Ø4.5	340-1003	1
2	DOUBLE AXLE 19 X 25	120-1001	1
3	HH SCREW M 12-90	850-1021	2
	HEX NUT M12	260-1012	2
4	LEFT LIFT ARM	5150-760-G018	1
5	HH SCREW M 12-30	850-2016	4
	HEX NUT M12	260-1012	4
6	SELF-TAPPING SCREW M 6.3 - 25.4	850-1062	2
7	INSTRUCTION MANUAL BOX	180-1032	1
8	DECAL - DO NOT STAND UNDER THE LOAD	460-1005	1
9	RIVET Ø3 X 10	697-1002	4
10	MACHINE DATA PLATE	460-1010	1
11	TORQUE SCREWDRIVER N.m	745-1001	1
	TORQUE SCREWDRIVER lbf.in	745-1002	1
12	COUPLER R.232	530-1002	1
13	SOCKET J.19	530-1001	1
14	LEFT SIDE	5150-195-1103	1
15	HH SCREW M 12-30	850-2016	6
	HEX NUT M12	260-1012	6
16	DECAL - FEET / HAND SEVERING HAZARDS	460-1007	2
17	HH SCREW M 12-30	850-2016	5
	HEX NUT M12	260-1012	5
18	HH SCREW M 12-35	850-2018	2
	HEX NUT M12	260-1012	2
19	HH SCREW M 12-35	850-2018	1
	HEX NUT M12	260-1012	1
20	SHOE	5150-710-1002	1
21	SIDE GUARD	5100-760-1205	2
22	HH SCREW M 12-30	850-2016	2
	HEX NUT M12	260-1012	2
23	SIDE GUARD SPACER	620-1144	2
24	HH SCREW M 12-70	850-2015	1
	HEX NUT M12	260-1012	1



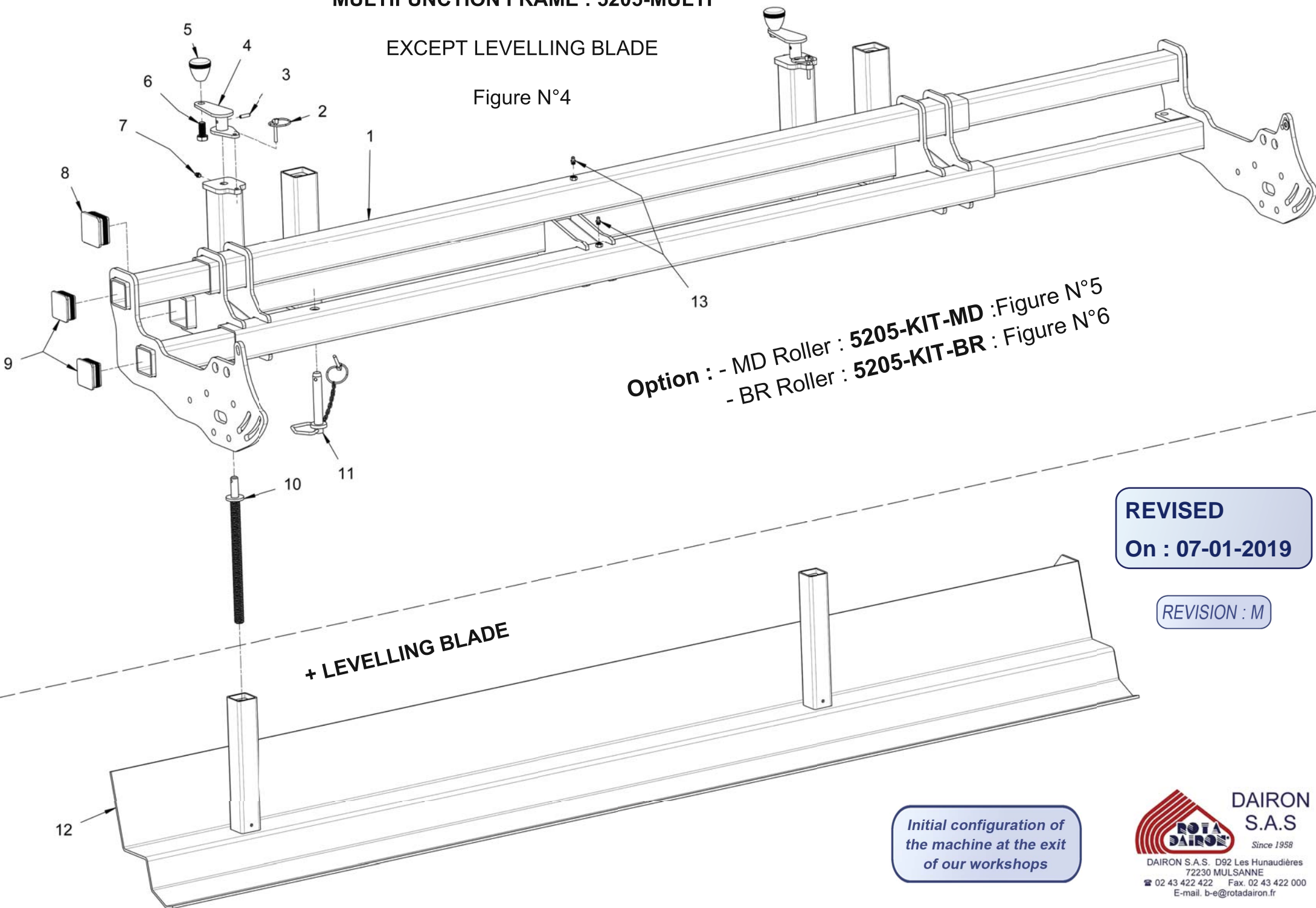
REV : M	PARTS LIST FIGURE N° 3 RD 250 FROM A572		07/01/2019
ITEM	DESIGNATION	PARTS REFERENCES	
		RD 250	QTY
25	HH SCREW M 12-130	850-2013	5
	HEX NUT M12	260-1012	5
26	GRID PLATE	5205-770-1080	1
27	GRID HINGE	5100-240-1005	5
28	HEX NUT M12	260-1012	10
29	HH SCREW M 12-35	850-2018	4
	WASHER W 12 YZP	695-1019	4
30	HOOD	5205-770-1059	1
31	GRID CLAMP	150-1001	21
32	HSHC SCREW M 10 -30	850-3002	81
	HEX NUT M10	260-1011	81
33	REAR FLAP	770-1081	1
34	HH SCREW M 10 -25	850-2003	4
	WASHER MU 10 YZP	695-1017	4
35	GRID FINGER	210-1002	82
36	HH SCREW M 12-80	850-2014	2
	HEX NUT M12	260-1014	2
37	RIGHT SIDE	5180-195-1105	1
38	HH SCREW M 12-70	850-2015	2
	HEX NUT M12	260-1012	2
	HEX NUT M12	260-1014	2
39	SPRING	660-1005	2
40	SPRING HANDLE	5075-620-1251	2
41	DECAL - DAIRON LOGO	460-1001	1
42	DOUBLE AXLE 22 X 28	120-1006	2
43	R-CLIP RETAINING PIN Ø6	340-1001	2
44	ARM BRACKET	5150-640-1006	2
45	SCREW OF CRANK	5100-850-1039	2
46	ARM	5150-270-1011	2
47	LINCH PIN Ø6	340-1005	2
48	DOWEL PIN Ø6 X 25	340-1007	2

REV : M	PARTS LIST FIGURE N° 3 RD 250 FROM A572		07/01/2019
ITEM	DESIGNATION	PARTS REFERENCES	
		RD 250	QTY
49	CRANK	5100-640-1001	2
50	CRANK HANDLE M 14	610-1001	2
51	HH SCREW M 14-30	850-2005	2
52	OILER M8	320-1001	2
53	HH SCREW M 12-30	850-2016	8
	HEX NUT M 12	260-1012	8
54	HITCH PIN WITH HANDLE Ø19 L 115	151-1002	2
55	RIGHT LIFT ARM	5150-760-D018	1
56	MAIN HITCH POINT	5150-750-1091	1
57	HH SCREW M 12-35	850-1018	4
	WASHER W 12 YZP	695-1004	4
58	LOCK PLATE STAND	620-1099	1
59	LOCK PLATE CLAW	640-1299	1
60	HH SCREW M 10 -30	850-2002	1
	HEX NUT M 10	260-1011	1
61	LOCK PLATE STAND CAP	156-1009	1
62	LOCK PLATE CLAW	3130-640-1300	1
63	RETAINING RING	190-1025	1

# MULTIFUNCTION FRAME : 5205-MULTI

EXCEPT LEVELLING BLADE

Figure N°4



Option : - MD Roller : 5205-KIT-MD : Figure N°5  
- BR Roller : 5205-KIT-BR : Figure N°6

**REVISED**  
On : 07-01-2019

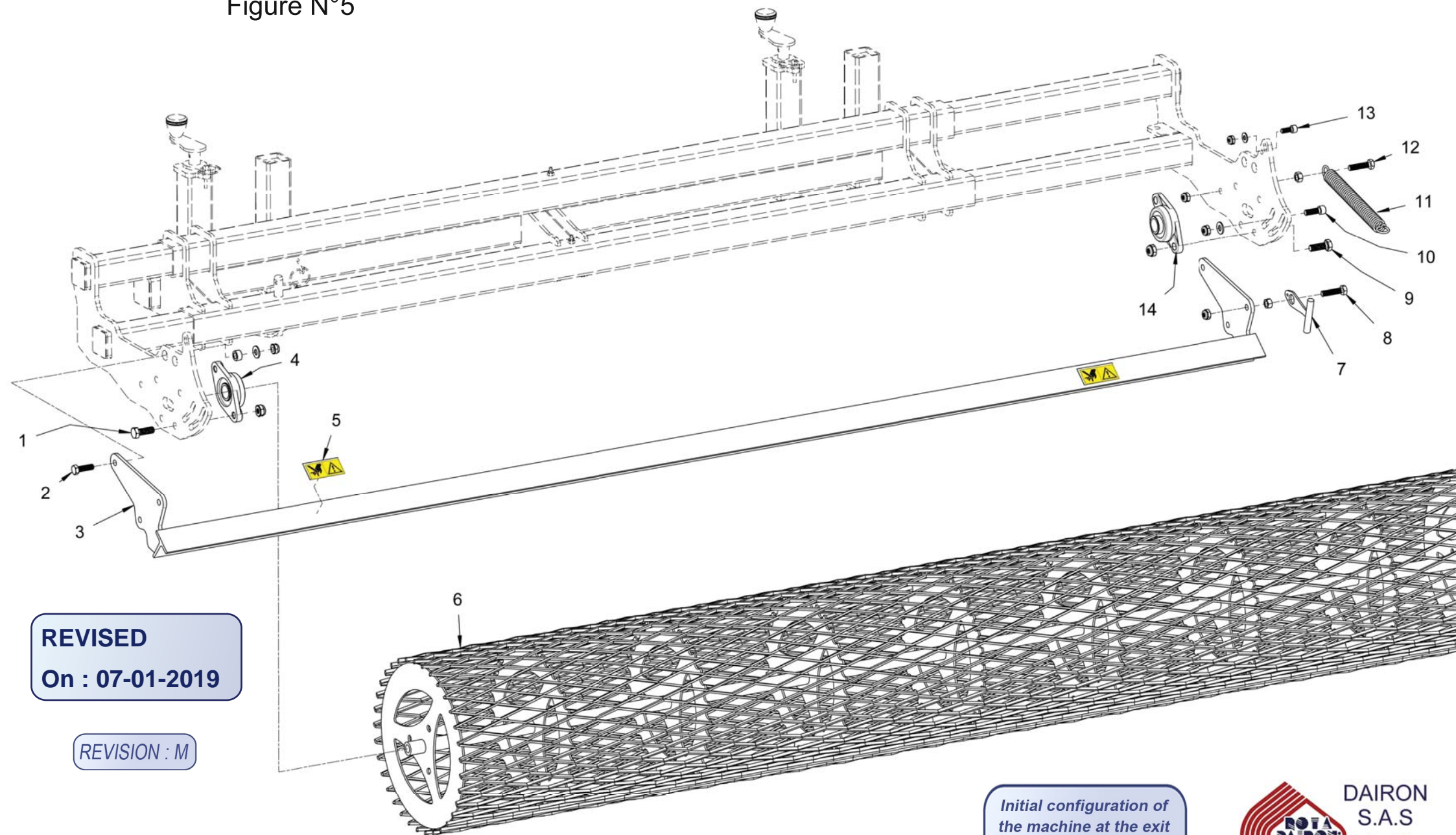
REVISION : M

*Initial configuration of  
the machine at the exit  
of our workshops*

REV : M	PARTS LIST FIGURE N° 4 RD 250 FROM A572		07/01/2019
ITEM	DESIGNATION	PARTS REFERENCES	
		RD 250	QTY
1	MULTIFONCTION FRAME	5205-270-1344	1
2	LINCH PIN Ø6	340-1005	2
3	DOWEL PIN Ø6 X 25	340-1007	2
4	CRANK	5036-640-1031	2
5	CRANK HANDLE M 14	610-1001	2
6	HH SCREW M 14-30	850-2005	2
7	OILER M8	320-1001	2
8	CAP 70 X 70	156-1003	2
9	CAP 60 x 60	156-1002	4
10	FRAME SCREW	5180-850-1043	2
11	HITCH PIN WITH HANDLE Ø19 X 115	151-1002	1
12	LEVELLING BLADE	5205-450-1043	1
13	OILER M8	320-1001	2

# OPTION MD ROLLER : 5200-KIT-MD

Figure N°5



**REVISED**  
On : 07-01-2019

REVISION : M

*Initial configuration of  
the machine at the exit  
of our workshops*



REV : M	PARTS LIST FIGURE N° 5 RD 250 FROM A572		07/01/2019
ITEM	DESIGNATION	PARTS REFERENCES	
		RD 250	QTY
1	HH SCREW M 14-40	850-2006	2
	HEX NUT M 14	260-1013	2
2	HH SCREW M 12-40	850-2007	2
	PIVOT SOCKET	240-1031	2
	WASHER MU 12	695-1018	2
	HEX NUT M 12	260-1012	2
3	MD SCRAPER	5205-725-1016	1
4	CAST IRON BEARING HOUSING UCFL 206	690-1021	1
5	DECAL - CATCHING HAZARD	460-1012	2
6	MD ROLLER	5205-505-1007	1
7	SPRING HANDLE	5075-620-1251	2
8	HH SCREW M 12-50	850-2012	2
	HEX NUT M 12	260-1014	2
	HEX NUT M 12	260-1012	2
9	HH SCREW M 14-40	850-2006	2
	HEX NUT M 14	260-1013	2
10	HSHC SCREW M 12 -35	850-3031	2
	WASHER MU 12	695-1018	2
	HEX NUT M 12	260-1012	2
11	SPRING	660-1005	2
12	HH SCREW M 12-50	850-2012	2
	HEX NUT M 12	260-1014	2
	HEX NUT M 12	260-1012	2
13	HSHC SCREW M 10 -25	850-3024	2
	WASHER MU 10	695-1017	2
	HEX NUT M 10	260-1011	2
14	CAST IRON BEARING HOUSING UCFL 206	690-1021	1

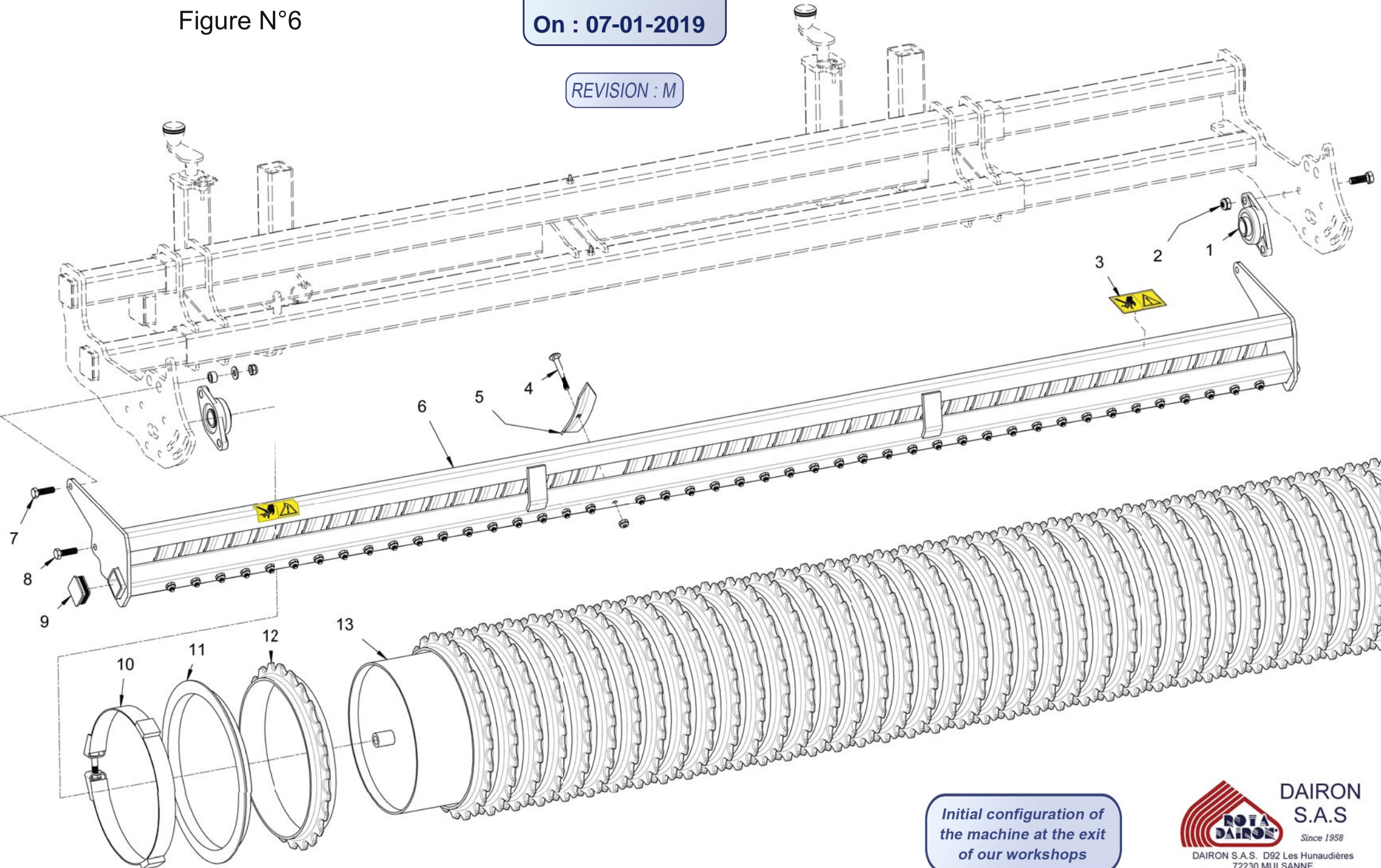
# OPTION BR ROLLER : 5200-KIT-BR

Figure N°6

REVISED

On : 07-01-2019

REVISION : M



Initial configuration of the machine at the exit of our workshops

REV : M	PARTS LIST FIGURE N° 6 RD 250 FROM A572		07/01/2019
ITEM	DESIGNATION	PARTS REFERENCES	
		RD 250	QTY
1	CAST IRON BEARING HOUSING UCFL 206	690-1021	2
2	HH SCREW M 14-40	850-2006	4
	HEX NUT M 14	260-1013	4
3	DECAL - CATCHING HAZARD	460-1012	2
4	RHS SCREW SQUARE NECK M 10 - 80	850-2034	45
	HEX NUT M 10	260-1011	45
5	SCRAPER TOOTH	200-1001	45
6	BR SCRAPER	5205-750-1714	1
7	HH SCREW M 12-40	850-2007	2
	PIVOT SOCKET	240-1031	2
	WASHER MU 12	695-1018	2
	HEX NUT M 12	260-1012	2
8	HH SCREW M 12-40	850-2007	2
	WASHER MU 12	695-1018	2
	HEX NUT M 12	260-1012	2
9	PLASTIC CAP 50 x 50	156-1001	2
10	LOCKING RING Ø325	158-1006	1
11	1/2 CAST-IRON DISC Ø325	158-1004	2
12	CAST-IRON DISC Ø325	158-1002	44
13	BR ROLLER	5205-760-1392	1

**OPTION : Hydraulic kit for displacement of the frame**

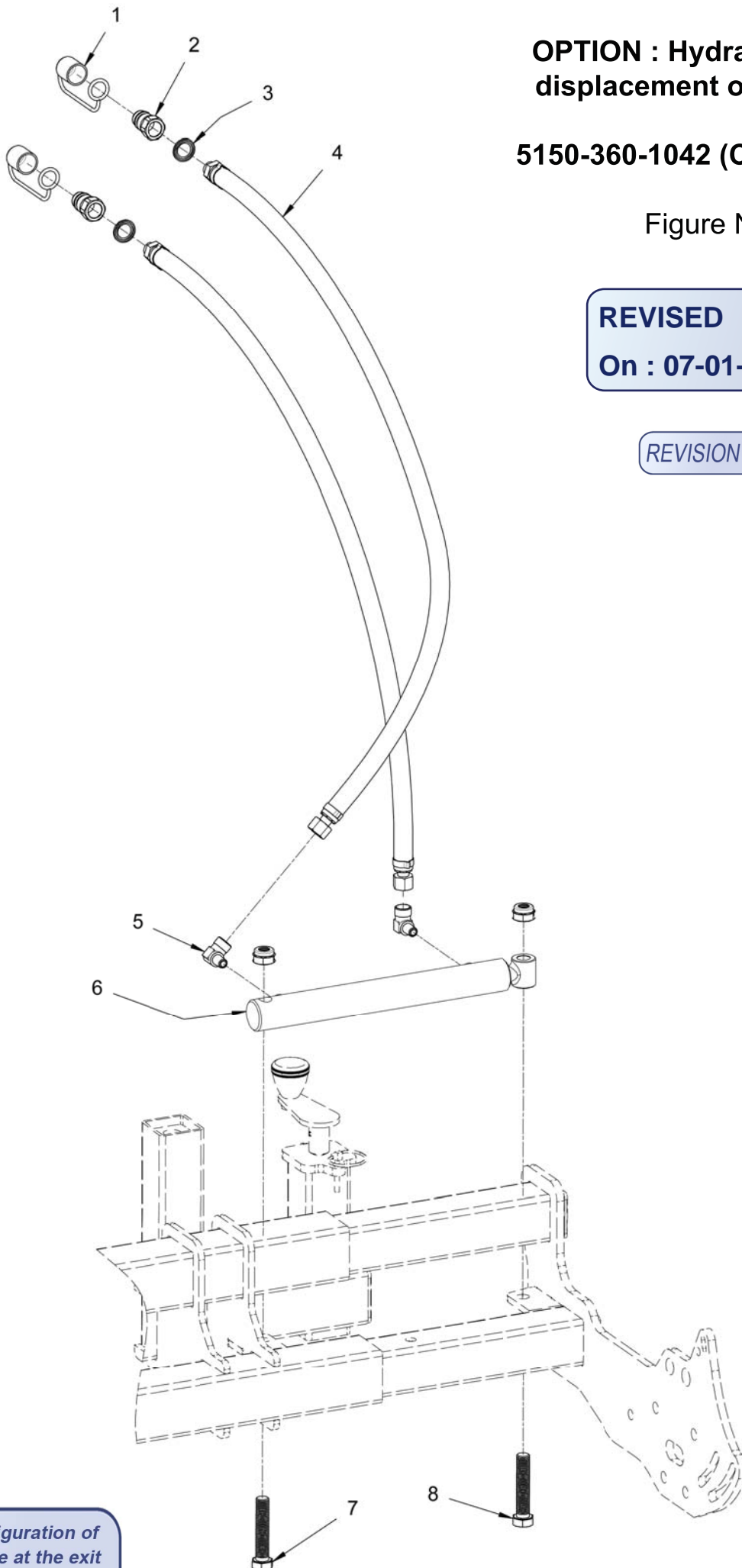
**5150-360-1042 (Complete kit)**

Figure N°7

**REVISED**

**On : 07-01-2019**

**REVISION : M**



*Initial configuration of the machine at the exit of our workshops*

REV : M	PARTS LIST FIGURE N° 7 RD 250 FROM A572		07/01/2019
ITEM	DESIGNATION	PARTS REFERENCES	
		RD 250	QTY
1	HYDRAULIC CAP	156-1012	2
2	MALE COUPLER POPPET VALVE 1/2	360-1030	2
3	COMPOSITE SEAL 21	360-1031	2
4	HOSE L : 3000	360-1227	2
5	ELBOW UNION G 13-8X13	265-1002	2
6	JACK 700/20	360-1042	1
7	HH SCREW M 16-80	850-2011	1
	HEX NUT M 16	260-1008	1
8	HH SCREW M 16-80	850-2011	1
	HEX NUT M 16	260-1008	1