

Initial configuration of the machine at the exit of our workshops

DRIVE SECTION & HOOD SECTION STH 36

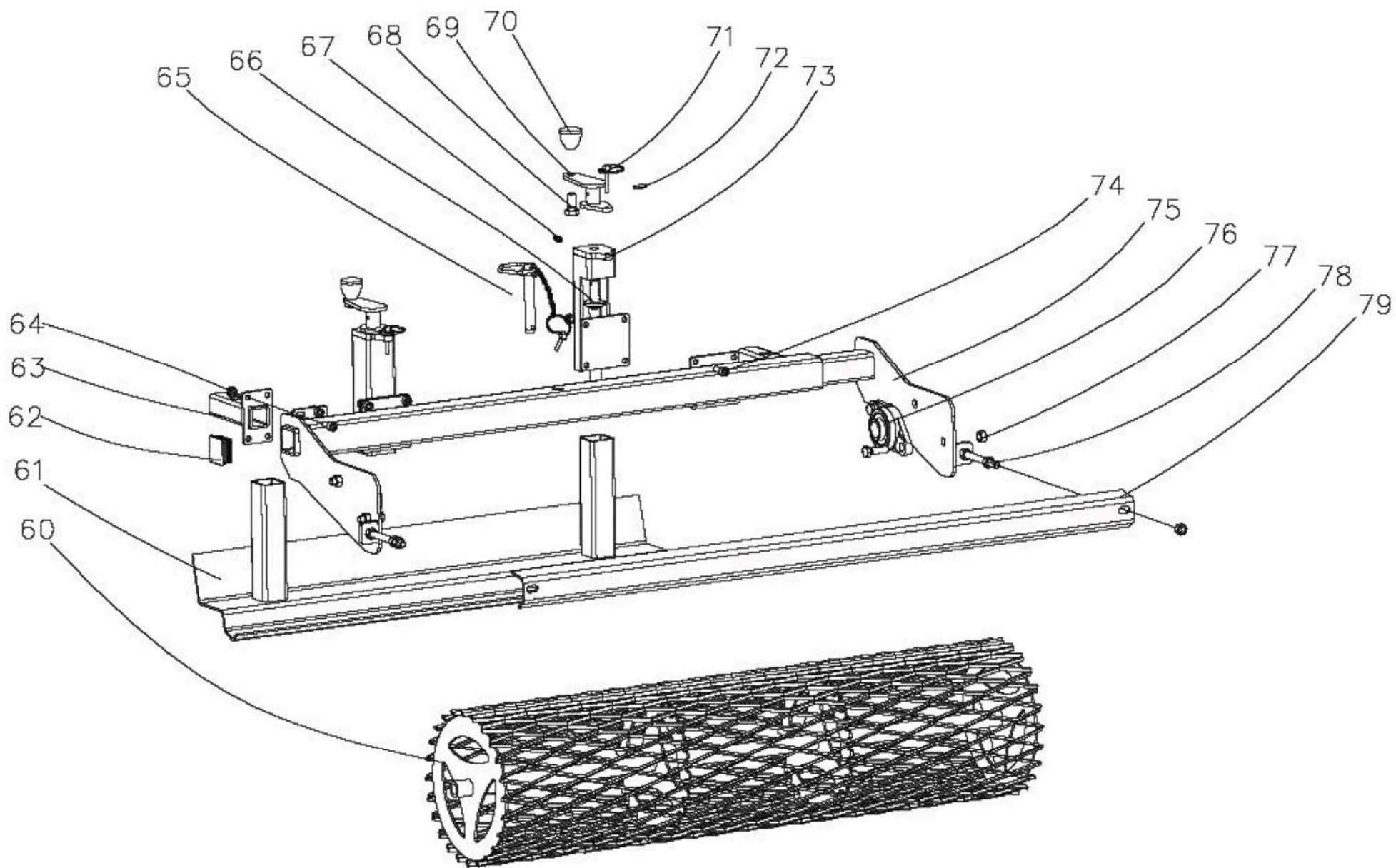
Figure N°1



PARTS LIST FIGURE N° 1 STH 36 UP - 5674			
ITEM	DESIGNATION	PARTS REFERENCES	
		STH 36	QTY
1	CHAIN CASE	180.1010	1
2	FILLER CAP	155.1003	1
3	CORK SEAL	420.1007	1
4	HH SCREW M 10 - 30	850.2002	2
4	HEX NUT M 10	260.1011	2
5	CHAIN 40 LINKS - 25,4 PITCH	175.1005	1
6	WASHER Ø42 / Ø8,5 / 5	695.1056	1
7	CHAIN SPROCKET 11T - 25,4 PITCH	600.1027	1
8	HH SCREW M 10 -25	850.2003	8
	HEX NUT M 10	260.1011	8
9	HH SCREW M 12-60	850.2009	4
	HEX NUT M 12	260.1012	4
10	LEFT SIDE	5036.195.1016	1
11	WASHER OF FIXING ENGINE	695.1053	1
12	HYDRAULIC MOTOR	360.1028	1
13	KEY 10 x 8 x 45	192.1001	1
14	HOOD	5036.770.1072	1
15	HH SCREW 12 - 25 COARSE	850.1010	4
	HEX NUT M 12	260.1012	4
16	GRID HINGE	5075.240.1019	2
17	GRID CLAMP	150.1002	7,5
18	HH SCREW M 10-130	850.2017	2
	HEX NUT M 10	260.1011	2
19	GRID FINGER	210.1004	31
20	HSHC SCREW M 8 - 30	850.3020	30
	HEX NUT M 8	260.1010	30
21	GRID	5036.770.1073	1
22	RIGHT SIDE	5036.195.1017	1
23	CAP	178.1004	1
24	HEX HEAD PLUG G 3/8	155.1001	1
25	HSHC SCREW M 8 - 25	850.3003	3
26	RIGHT ARM FEMALE	5036.640.D024	1
27	HITCH PIN WITH HANDLE Ø19 L 90	151.1001	2
28	HH SCREW M 10 -45	850.2008	2
	HEX NUT M 10	260.1011	2
29	SHOE	5075.710.1003	1
30	HEX HEAD PLUG G 3/8	155.1001	1

Initial configuration of the machine at the exit of our workshops

PARTS LIST FIGURE N° 1 STH 36 UP - 5674			
ITEM	DESIGNATION	PARTS REFERENCES	
		STH 36	QTY
31	HH SCREW M 8-25	850.2024	10
	HEX NUT M 8	260.1010	10
32	HEX HEAD PLUG G 3/8	155.1001	1
33	HH SCREW M 16-80	850.2011	1
	HEX NUT M 16	260.1015	1
34	CIRCLIP Ø 40 EXT.	190.1001	1
35	CHAIN 40 LINKS - 25,4 PITCH	600.1012	1
36	CIRCLIP Ø 80 INT	190.1008	1
37	BEARING 6208	690.1004	1
38	HH SCREW M 12-60	850.2009	1
	HEX NUT M 12	260.1012	1
39	WASHER OF TENSIONER	695.1057	1
40	CHAIN TENSIONER	5075.730.1002	1
41	SPRING	660.1005	1
42	HH SCREW M 12-60	850.2009	1
	HEX NUT M 12	260.1014	1
	HEX NUT M 12	260.1012	1
43	SLEEVE OF TENSIONER	240.1020	1
44	LEFT ARM FEMALE	5036.640.G024	1
45	SPRING HANDLE	5075.620.1019	1
46	LIP SEAL 45 X 60 X 10 DL	400.1009	1
47	HH SCREW 1/2 - 43	850.1003	6
	HEAVY HEX NUT 1/2	260.1002	6
48	DRIVE PLATE	5075.630.1008	1
49	RIGHT BLADE	450.1001	10
50	LEFT BLADE	450.1002	10
51	BLADE BOLT	4000.001	40
52	ROTOR	5036.760.1049	1
53	SMALL PLATE	5150.630.1003	1
54	HH SCREW 1/2 - 38	850.1002	6
55	LIP SEAL 40 X 58 X 10 DL	400.1002	1
56	BEARING 22206	690.1017	1
57	WASHER 30 * 40 * 2	695.1028	1
58	CIRCLIP Ø 30 EXT.	190.1002	1
59	HH SCREW M 14-30	850.2005	4
	HEX NUT M 14	260.1013	4



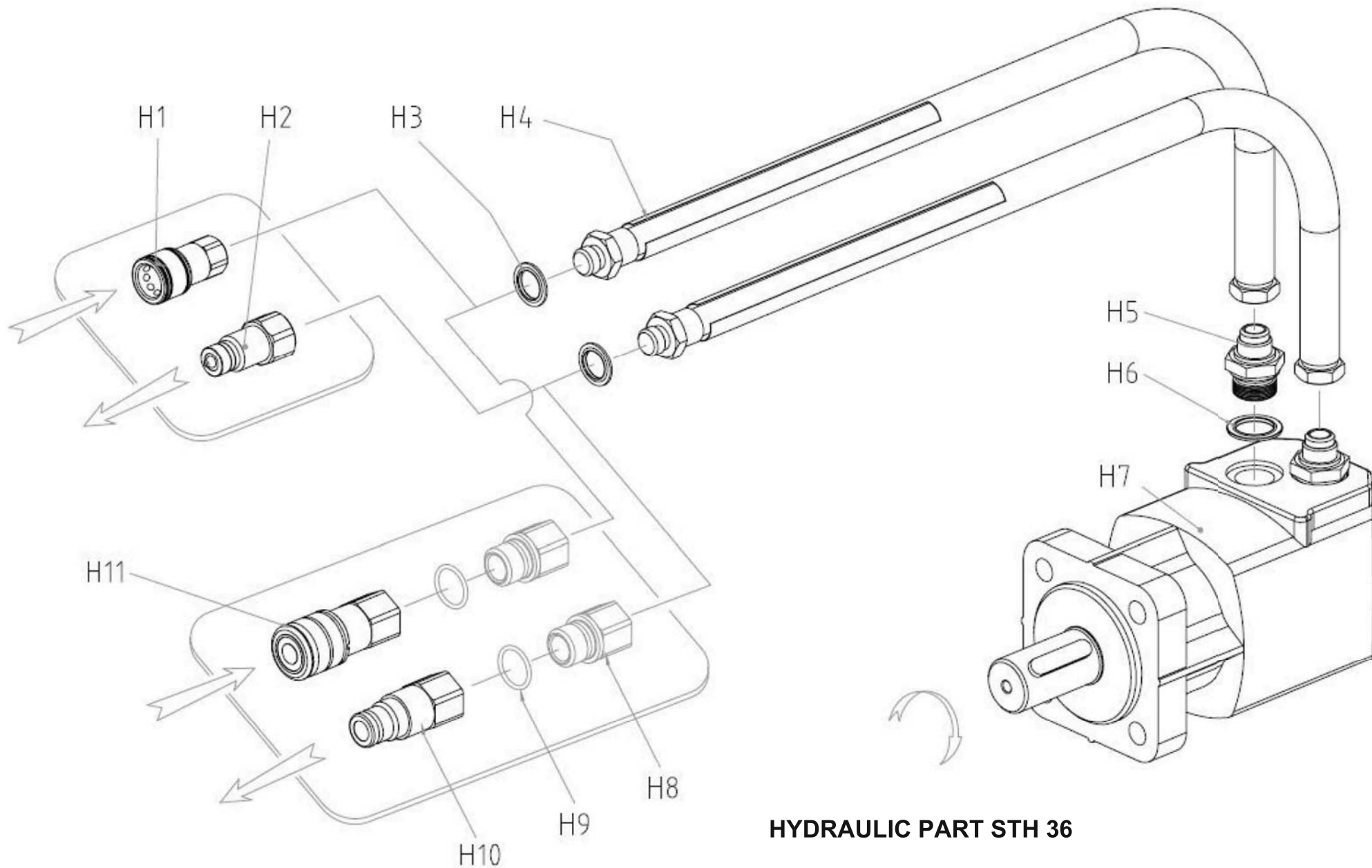
Initial configuration of the machine at the exit of our workshops

MD FRAME STH 36

Figure N°2



PARTS LIST FIGURE N° 2 STH 36 UP - 5674			
ITEM	DESIGNATION	PARTS REFERENCES	
		STH 36	QTY
60	MD ROLLER	5036.505.1012	1
61	LEVELLING BLADE	5036.450.1033	1
62	PLASTIC CAP 50 x 50	156.1001	2
63	MALE ARM	5036.640.1029	1
64	HSHC SCREW M 10 -25	850.3024	8
	HEX NUT M10	260.1011	8
65	HITCH PIN WITH HANDLE Ø19 L 90	151.1001	1
66	FRAME SCREW	5100.850.1039	2
67	OILER M8	320.1001	2
68	HH SCREW M 14-30	850.2005	2
69	CRANK	5036.640.1031	2
70	CRANK HANDLE M 14	610.1001	2
71	LINCH PIN Ø6	340.1005	2
72	DOWEL PIN Ø6 X 25	340.1007	2
73	TUBE FEMALE OF BLADE	5036.640.1055	2
74	HSHC SCREW M 10 -25	850.3024	4
	HEX NUT M10	260.1011	4
75	MD FRAME	5036.750.1089	1
76	CAST IRON BEARING HOUSING UCFL 206	690.1021	2
77	HH SCREW M 14-35	850.2019	4
	HEX NUT M14	260.1013	4
78	HH SCREW M 12-80	850.2014	2
	HEX NUT M12	260.1014	4
	WASHER MU 12	695.1018	4
	HEX NUT M12	260.1012	2
79	MD SCRAPER	770.1074	1



HYDRAULIC PART STH 36

Figure N°4



Initial configuration of the machine at the exit of our workshops

PARTS LIST FIGURE N° 3 STH 36 UP - 5674			
ITEM	DESIGNATION	PARTS REFERENCES	
		STH 36	QTY
H1	FEMALE COUPLER	360.1029	1
H2	MALE COUPLER	360.1030	1
H3	COMPOSITE SEAL 21	360.1031	2
H4	HOSE L : 1800	360.1033.A	2
	PROTECTIVE SHEATH	360.1077	2
H5	ADAPTOR	360.1032	2
H6	COMPOSITE SEAL 21	360.1031	2
H7	HYDRAULIC MOTOR	360.1028	1
H8	ADAPTOR	360.1046	2
H9	SEAL OR FOR COUPLERS	360.1048	2
H10	MALE COUPLER ANTIPOLLUTION	360.1044	1
H11	FEMALE COUPLER ANTIPOLLUTION	360.1045	1