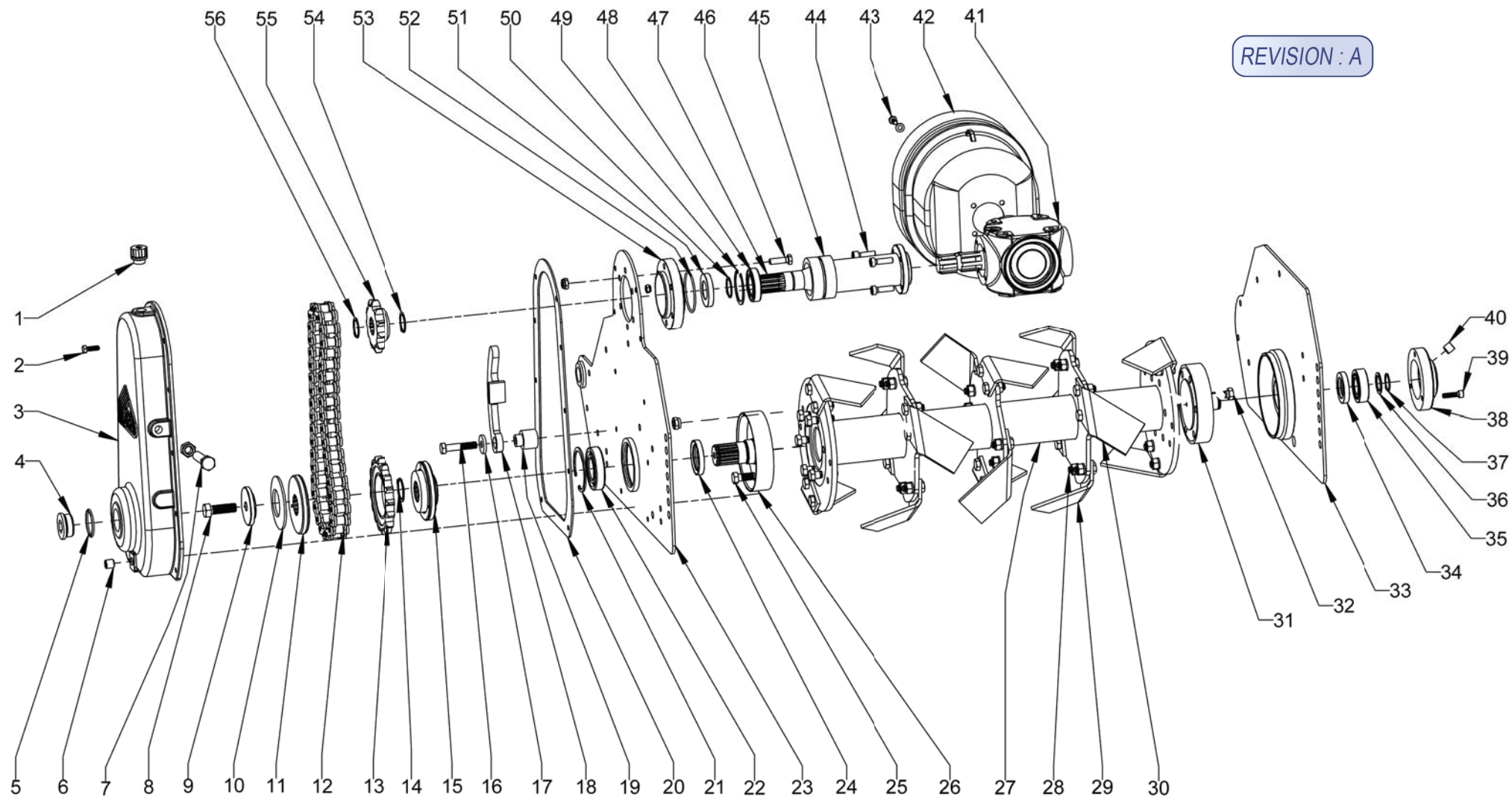


# DRIVE SECTION STONY 90

Figure N°1

REVISION : A



Initial configuration of the machine at the exit of our workshops

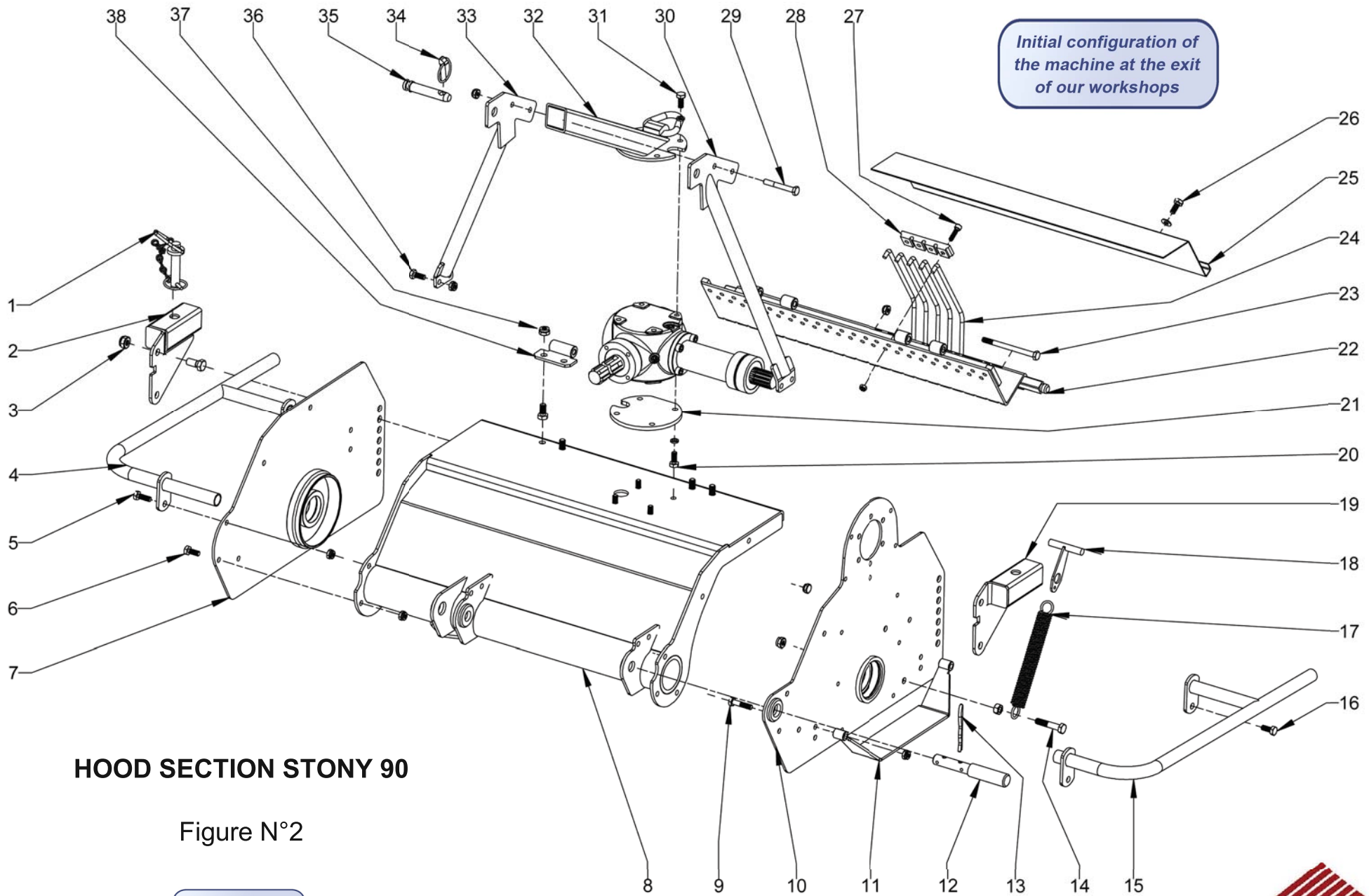


REV : A	PARTS LIST FIGURE N° 1 STONY 90 FROM 2422 WITH - 5960		
ITEM	DESIGNATION	PARTS REFERENCES	
		STONY 90	QTY
1	FILLER CAP	155.1011	1
2	HH SCREW M 8-25 YZP	850.2024	10
	HEX NUT M 8	260.1010	10
3	CHAIN CASE	180.1001	1
4	CHAIN CASE CAP	155.1002	1
5	COPPER SEAL	410.1001	1
6	HEX HEAD PLUG G 3/8	155.1001	1
7	HH SCREW M 16-80	850.2011	1
	HEX NUT M 16	260.1015	1
8	HH SCREW M 16-50	850.1016	1
9	SHOCK ABSORBER MOUNTING	145.1003	1
10	BELLEVILLE WASHER	695.1092	1
11	FRONT CLUTCH PLATE	5075.250.1011	1
12	CHAIN 40 LINKS - 25,4 PITCH	175.1005	1
13	CHAIN SPROCKET	5055.600.1039	1
14	CIRCLIP Ø 40 EXT.	190.1001	1
15	REAR CLUTCH PLATE	5075.250.1010	1
16	HH SCREW M 12-60	850.2009	1
	HEX NUT M 12	260.1012	1
17	WASHER OF TENSIONER	695.1057	1
18	CHAIN TENSIONER	5075.730.1002	1
19	SLEEVE OF TENSIONER	240.1020	1
20	COPPER SEAL	420.1007	1
21	CIRCLIP Ø 80 INT	190.1008	1
22	BEARING 6208	690.1004	1
23	LEFT SIDE	5090.195.1026	1
24	LIP SEAL 45 X 60 X 10 DL	400.1009	1
25	HH SCREW 1/2 - 43	850.1003	6
	HEAVY HEX NUT 1/2	260.1002	6
26	DRIVE PLATE	5090.630.1008	1
27	ROTOR	5036.760.1049	1
28	BLADE BOLT	4000.001	40
29	RIGHT BLADE	450.1001	10
30	LEFT BLADE	450.1002	10
31	SMALL PLATE	5150.630.1003	1

Initial configuration of the machine at the exit of our workshops

REV : A	PARTS LIST FIGURE N° 1 STONY 90 FROM 2422 WITH - 5960		
ITEM	DESIGNATION	PARTS REFERENCES	
		STONY 90	QTY
32	HH SCREW 1/2 - 38	850.1002	6
	HEAVY HEX NUT 1/2	260.1002	6
33	RIGHT SIDE	5036.195.1017	1
34	LIP SEAL 40 X 58 X 10 DL	400.1002	1
35	BEARING 22206	690.1017	1
36	WASHER 30 * 40 * 2	695.1028	1
37	CIRCLIP Ø 30 EXT.	190.1002	1
38	CAP	178.1004	1
39	HSHC SCREW M 8 - 25	850.3003	3
40	HEX HEAD PLUG G 3/8	155.1001	1
41	COMPLETE TRANSFER CASE	095.1017	1
42	GUARD CONE	093.1006	1
43	HH SCREW M 8-16 YZP	850.2036	4
	WASHER MU 8 YZP	695.1062	4
44	HSHC SCREW M 8 - 25	850.3003	4
45	SHAFT TUBE	095.1018	1
46	HH SCREW M 10 -35		
	HEX NUT M 10		
47	OUTPUT SHAFT	5090-100.1098	1
48	BEARING 6209	690.1011	1
49	CIRCLIP Ø 85 INT.	190.1007	1
50	CIRCLIP Ø 45 EXT.	190.1003	1
51	LIP SEAL 45 X 85 X 10 DL	400.1001	1
52	O-RING SEAL 95 X 2.5	400.1008	1
53	SCREW-IN SHAFT TUBE HOUSING		
54	CIRCLIPS		
	SPACER BUSHING	139.1002	1
55	CHAIN SPROCKET 11T - 25,4 PITCH	600.1050	1
56	CIRCLIP Ø 40 EXT.	190.1001	1

Initial configuration of the machine at the exit of our workshops



Initial configuration of the machine at the exit of our workshops

**HOOD SECTION STONY 90**

Figure N°2

REVISION : A



REV : A	PARTS LIST FIGURE N° 2 STONY 90 FROM 2422 WITH - 5960		
ITEM	DESIGNATION	PARTS REFERENCES	
		STONY 90	QTY
1	HITCH PIN WITH HANDLE Ø19 L 90	151.1001	2
2	RIGHT ARM FEMALE	5036.640.D024	1
3	HH SCREW M 14-30	850.2005	4
	HEX NUT M14	260.1013	4
4	RIGHT SIDE GUARD	5075.760.D022	1
5	HH SCREW M 10 -30	850.2002	2
	HEX NUT M 10	260.1011	2
6	HH SCREW 10 - 25 COARSE	850.1011	8
	HEX NUT M 10	260.1011	8
7	RIGHT SIDE	5036.195.1017	1
8	HOOD	5090.770.1184	1
9	HH SCREW M 10 -45	850.2008	2
	HEX NUT M 10	260.1011	2
10	LEFT SIDE	5090.195.1026	1
11	SHOE	5075.710.1003	1
12	DOUBLE AXLE 22 X 28	120.U002	2
13	R-CLIP RETAINING PIN Ø6	340.1001	2
14	HH SCREW M 12-60	850.2009	1
	HEX NUT M 12	260.1014	1
	HEX NUT M 12	260.1012	1
15	LEFT SIDE GUARD	5075.760.G022	1
16	HH SCREW M 10 -25	850.2003	2
	HEX NUT M 10	260.1011	2
17	SPRING	660.1005	1
18	SPRING HANDLE	5075.620.1019	1
19	LEFT ARM FEMALE	5036.640.G024	1
20	HH SCREW 12 - 30 COARSE	850.1014	4
	WASHER W 12 COARSE	695.1004	4
21	PLATINUM CASE BRACE		
22	GRID	5036.770.1073	1
23	HH SCREW M 10-130	850.2017	2
	HEX NUT M 10	260.1011	2
24	GRID FINGER	210.1004	31
25	REAR FLAP		
26	HH SCREW M 10 -25		
	WASHER MU 10 YZP		

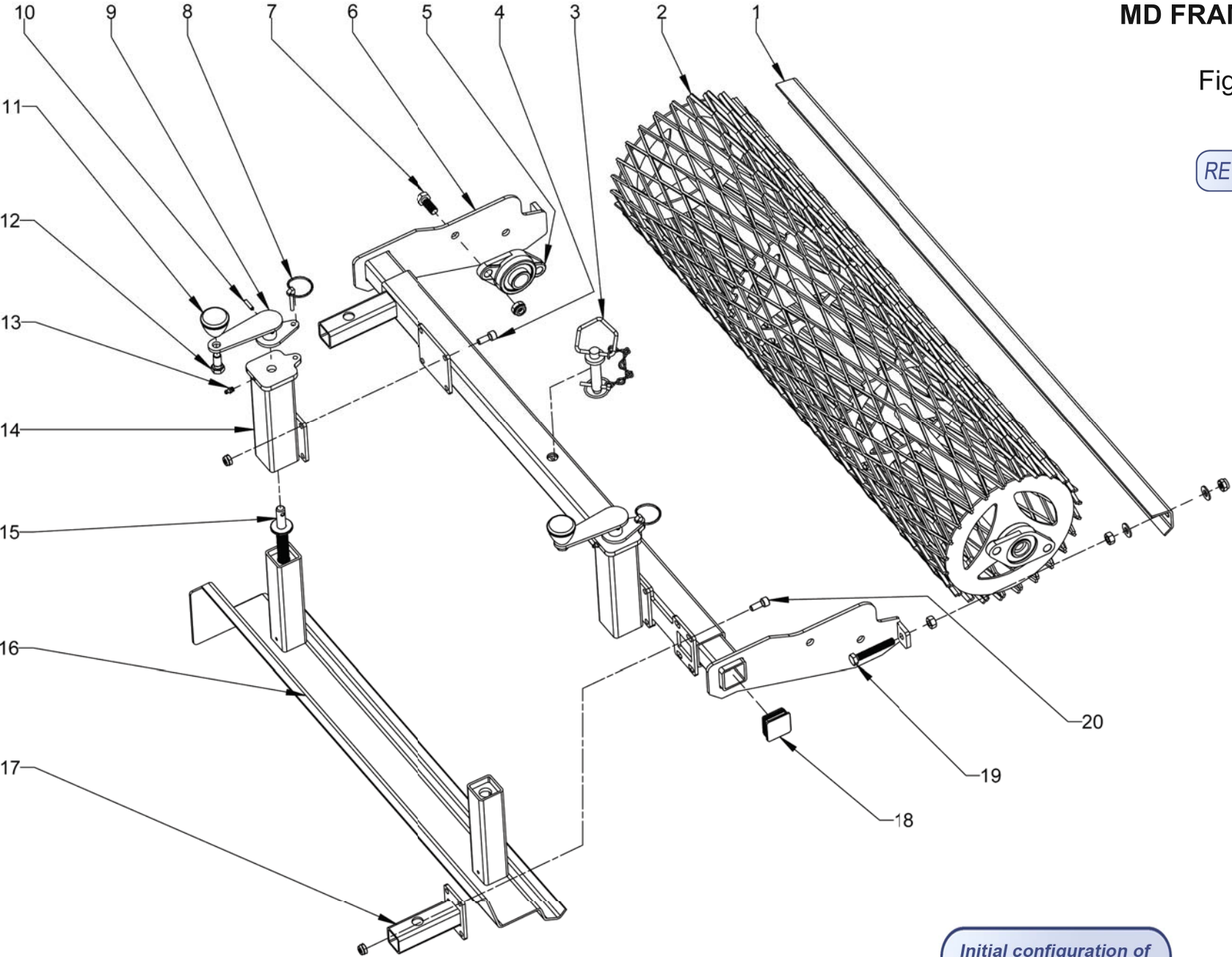
Initial configuration of the machine at the exit of our workshops

REV : A	PARTS LIST FIGURE N° 2 STONY 90 FROM 2422 WITH - 5960		
ITEM	DESIGNATION	PARTS REFERENCES	
		STONY 90	QTY
27	HSHC SCREW M 8 - 30	850.3020	30
	HEX NUT M 8	260.1010	30
28	GRID CLAMP	150.1002	8
29	HH SCREW 10 - 75 COARSE	850.1013	2
	HEX NUT M 10	260.1011	2
30	LEFT LIFT ARM	5075.760.G029	1
31	HH SCREW 12 - 30 COARSE	850.1014	4
	WASHER W 12 COARSE	695.1004	4
32	MAIN HITCH POINT	3140.750.1041	1
33	RIGHT LIFT ARM	5075.760.D029	1
34	LINCH PIN Ø11	340.1004	1
35	AXLE Ø19	120.1005	1
36	HH SCREW M 10 -25	850.1011	4
	HEX NUT M 10	260.1011	4
37	HH SCREW M 12-25	850.1010	4
	HEX NUT M 12	260.1012	4
38	GRID HINGE	5075.240.1019	2

**MD FRAME STONY 90**

Figure N°3

REVISION : A



Initial configuration of the machine at the exit of our workshops



REV : A	PARTS LIST FIGURE N° 3 STONY 90 FROM 2422 WITH - 5960		
ITEM	DESIGNATION	PARTS REFERENCES	QTY
1	MD SCRAPER	770-1074	1
2	MD ROLLER	5036-505-1012	1
3	HITCH PIN WITH HANDLE Ø19 L 90	151-1001	1
4	HSHC SCREW M 10 -25 YZP	850-3024	8
	HEX NUT M 10	260-1011	8
5	CAST IRON BEARING HOUSING UCFL 206	690-1021	2
6	MD FRAME	5036-750-1089	1
7	HH SCREW M 14-35	850-2019	4
	HEX NUT M 14	260-1013	4
8	LINCH PIN Ø6	340-1005	2
9	CRANK	5100-640-1001	2
10	DOWEL PIN Ø6 X 25	340-1007	2
11	CRANK HANDLE M 14	610-1001	2
12	HH SCREW M 14-30	850-2005	2
13	OILER M8	320-1001	2
14	TUBE FEMALE OF BLADE	5036-640-1055	2
15	FRAME SCREW	5100-850-1039	2
16	LEVELLING BLADE	5036-450-1033	1
17	MALE ARM	5036-640-1029	1
18	PLASTIC CAP 50 x 50	156-1001	2
19	HH SCREW M 12-80	850-2014	2
	HEX NUT M 12	260-1014	4
	WASHER MU 12	695-1018	4
	HEX NUT M 12	260-1012	2
20	HSHC SCREW M 10 -25 YZP	850-3024	4
	HEX NUT M 10	260-1011	4